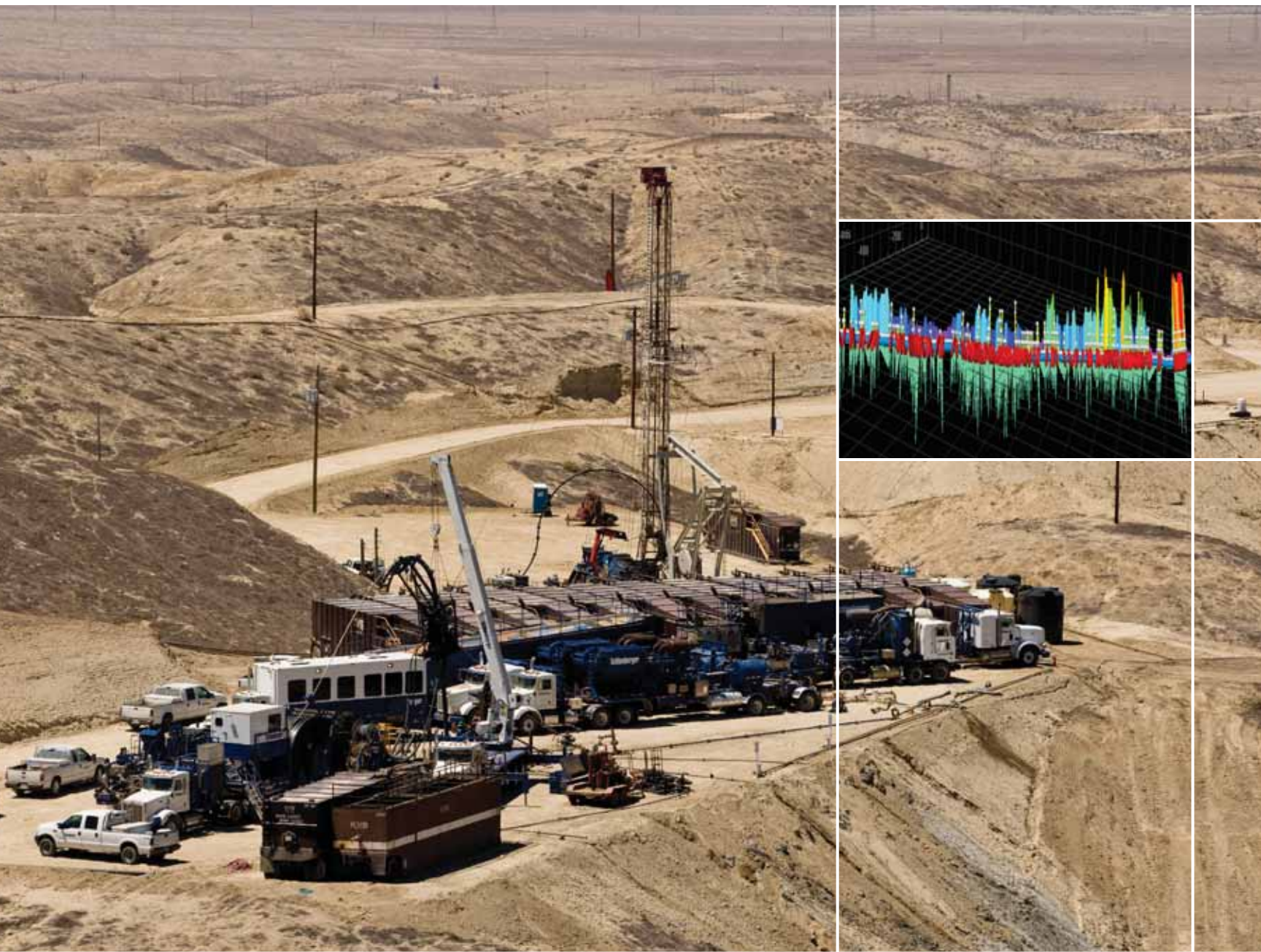


ACTive

Family of live downhole CT services

The confidence to act



MEASURE



Every improvement begins with a measurement. ACTive services allow you to monitor your job downhole as it occurs. Continuous monitoring lets you watch events as they unfold to build an exact picture of progress and to alert you to any issues as they are encountered.

INTERPRET

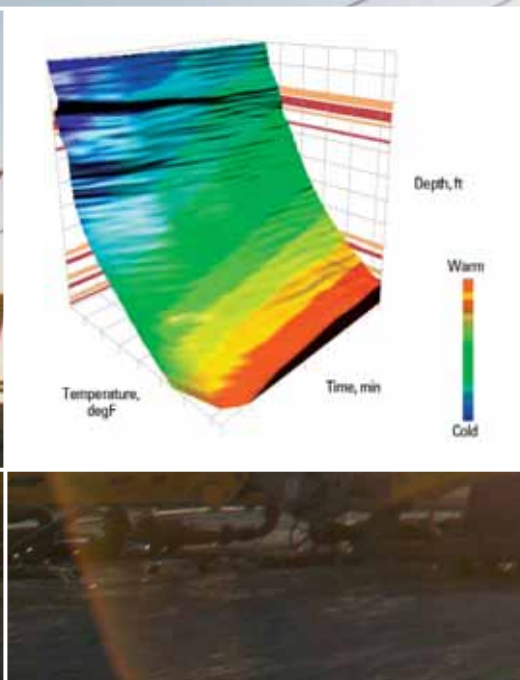


As you monitor, you gain unique quantitative feedback and live insight direct from the wellbore. Real-time interpretation through Decipher* dynamic evaluation software provides the information you need to cross-reference what you are seeing downhole with surface and petrophysical data for a dynamic breakdown of service performance.

ACT

When you know what's happening downhole, you can act with a greater degree of confidence. For the first time, you can adjust job parameters based on real-time downhole information to optimize performance—all on the fly. With ACTive services, you gain the confidence to act decisively.

You can **only improve**
what you can **measure.**



Measuring and understanding downhole pressure, temperature, and depth correlation in real time is now possible with the new innovative coiled tubing intervention services from Schlumberger.

The ACTive family of live coiled tubing (CT) services allows downhole measurement, interpretation, and job optimization. These services provide the information you need to adjust job parameters, to improve effectiveness, to reduce risks, and to optimize performance when it matters most—while the treatment is still in progress.

For every application, a customized live downhole CT service helps you maximize treatment efficiency and reservoir performance.

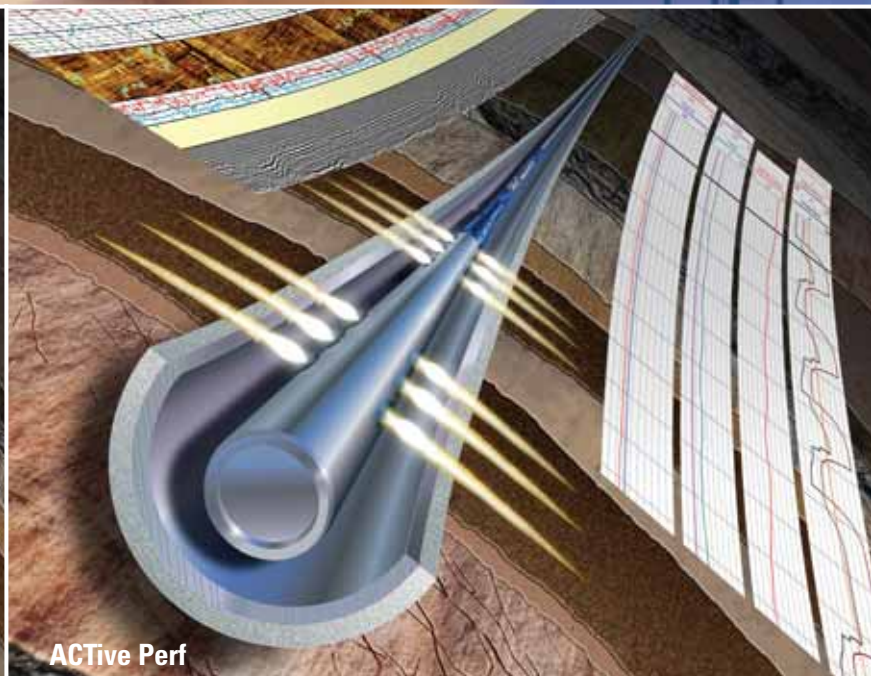
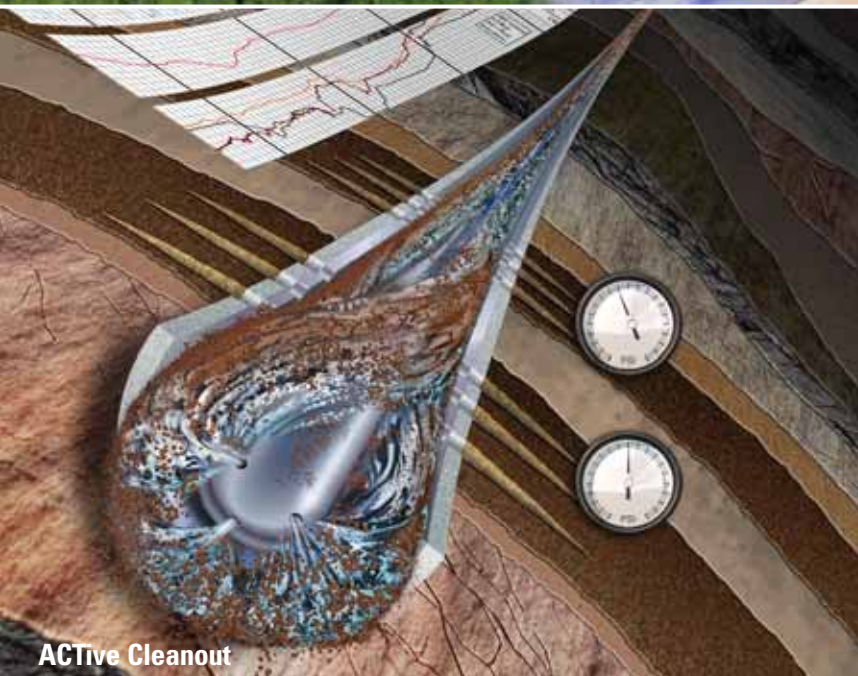
ACTive services allow you to measure, interpret, and **act with confidence.**

Technology platform

The ACTive family of services provides live downhole measurements conveyed on fiber-optic-telemetry-enabled CT. The system consists of a bottomhole assembly (BHA), surface electronics, and dynamic interpretation software. It delivers internal and external pressure, temperature, CCL depth correlation, and distributed temperature measurements (DTS). These real-time CT services give you the opportunity to monitor and evaluate job progress, to optimize treatment results, and to intervene with one trip in hole.



Designed with your reservoir in mind



The ACTIVE family of downhole CT services improves efficiency and reservoir performance.

ACTIVE Matrix

Optimizes CT matrix stimulation through live monitoring of injection rates and downhole pressure and temperature to allow maximum fluid penetration and diversion and to optimize treatment volumes. This real-time process improves current treatment performance and enhances design of subsequent treatments.

ACTIVE Isolation

Achieves accurate depth setting, sealing elements operation, and fluid placement intended for performing temporary or permanent CT zonal isolation, all in a single run. Controlling the pressure differential across the sealing elements and tools improves performance and reduces operational risk.

ACTIVE Cleanout

Enables efficient and effective CT fill cleanout by avoiding formation damage, reducing the number of trips and the total operating time, and optimizing fluid volume and penetration rate into the fill. Active monitoring of the pressure differential across the BHA greatly improves its performance.

ACTIVE Lift

Improves CT nitrogen lift operation time and fluid efficiency based on continuous monitoring of wellbore pressure, leading to faster and more controlled restoration of well production while avoiding solids production. This service also aids field performance characterization and artificial lift evaluation.

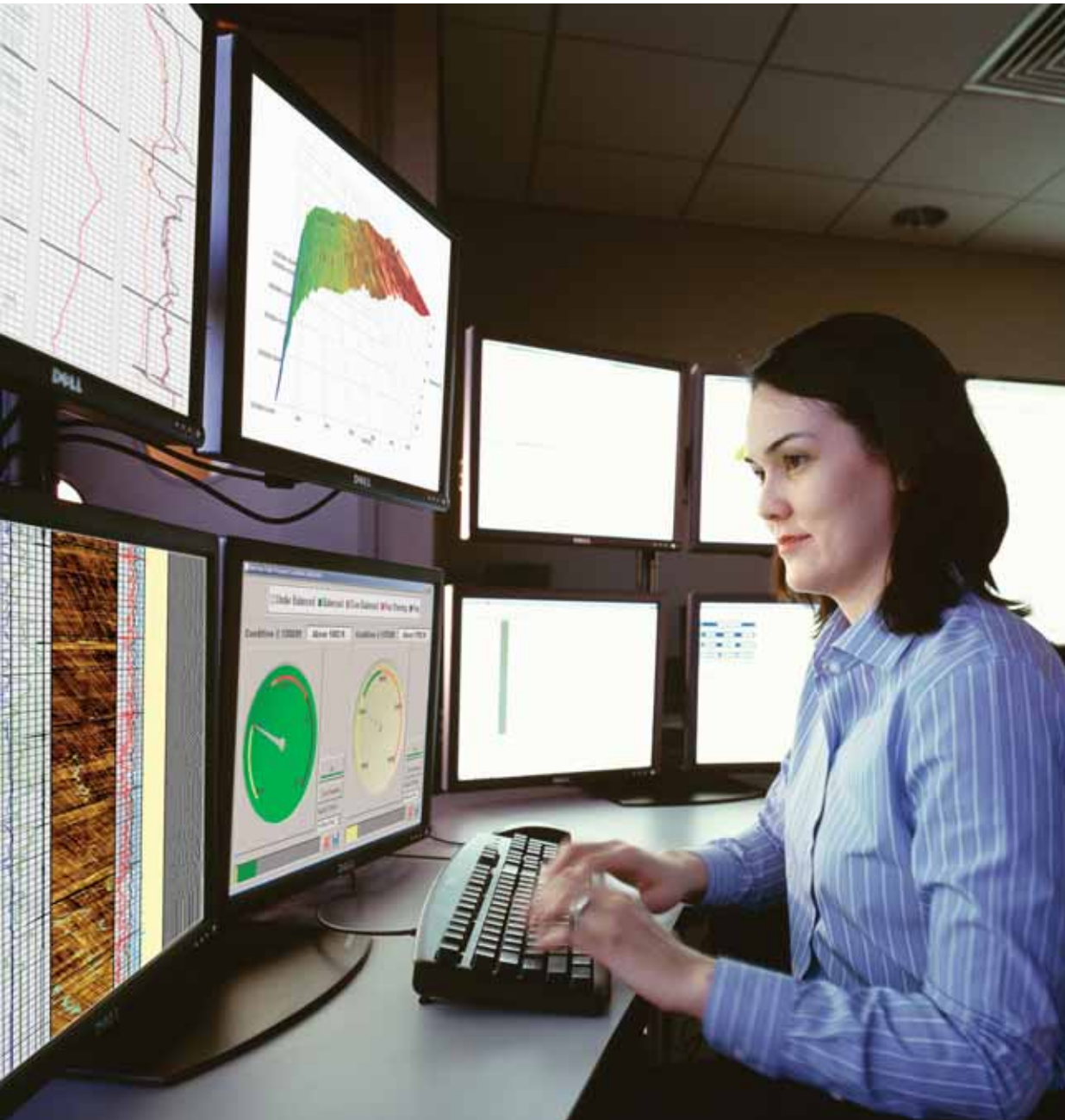
ACTIVE Perf

Achieves accurate depth control in a single run and ensures target zone coverage. Controlling hydrostatic balance avoids formation damage, formation fluid invasion, and formation sanding. Verification of gun activation leads to improved CT perforating safety and reliability.

ACTIVE Profiling

Enhances all ACTIVE services with DTS profiling to provide a 3D temperature profile of the entire wellbore to monitor treatment fluid placement and well production performance. Temperature profiling provides the ability to perform active point measurements and DTS spatial measurements on the same run.

ACTive



ACTive Services:

- ACTive Matrix
- ACTive Cleanout
- ACTive Perf
- ACTive Isolation
- ACTive Lift
- ACTive Profiling



Cover: ACTive Matrix

*Mark of Schlumberger
Copyright © 2008 Schlumberger. All rights reserved. 08-CT-019

www.slb.com/active

Schlumberger