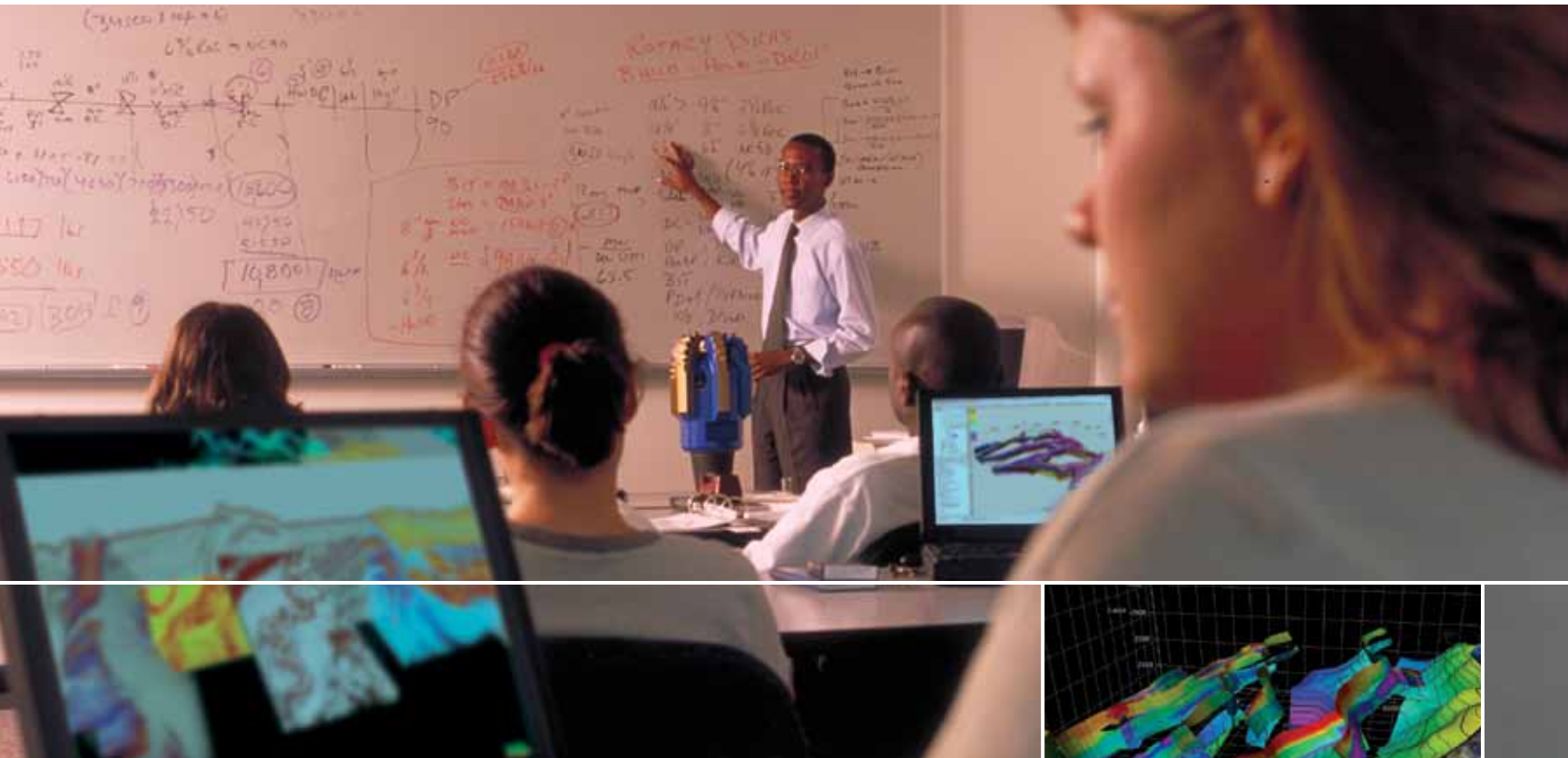




## SIS Education Services

Comprehensive, **quality** education options

# SIS Education Services



**Competency development is critical for oil and gas companies to get maximum value from existing technology. This has never been more true than today. SIS can provide employees with the training and education they need to meet your challenging strategic goals.**

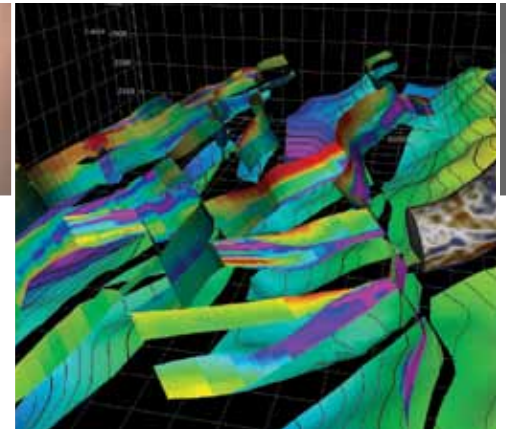
Schlumberger Information Solutions (SIS) provides a wide variety of educational services—for users from beginning to advanced—allowing clients to tailor training curricula to their specific requirements. SIS has five training options:

- public courses at SIS location with a mixed group of industry attendees
- private standard courses at SIS or client location for that company's personnel only
- custom courses tailored to client workflows
- eLearning (Web-based) software product training
- Technology Mastery, a custom solution including a complete skills assessment and certification program.

These comprehensive options allow customers to receive training on the latest solutions from Schlumberger experts specific to their unique requirements, enabling them to

- get up to speed quickly with introductory-level courses
- reach higher levels of productivity with advanced or workflow-focused courses
- support change management associated with the adoption of new technologies and business processes
- unlock the value of technology.

Quality training is of paramount importance to us. SIS delivers training at more than 25 dedicated training centers around the world, leveraging a vast range of expertise.

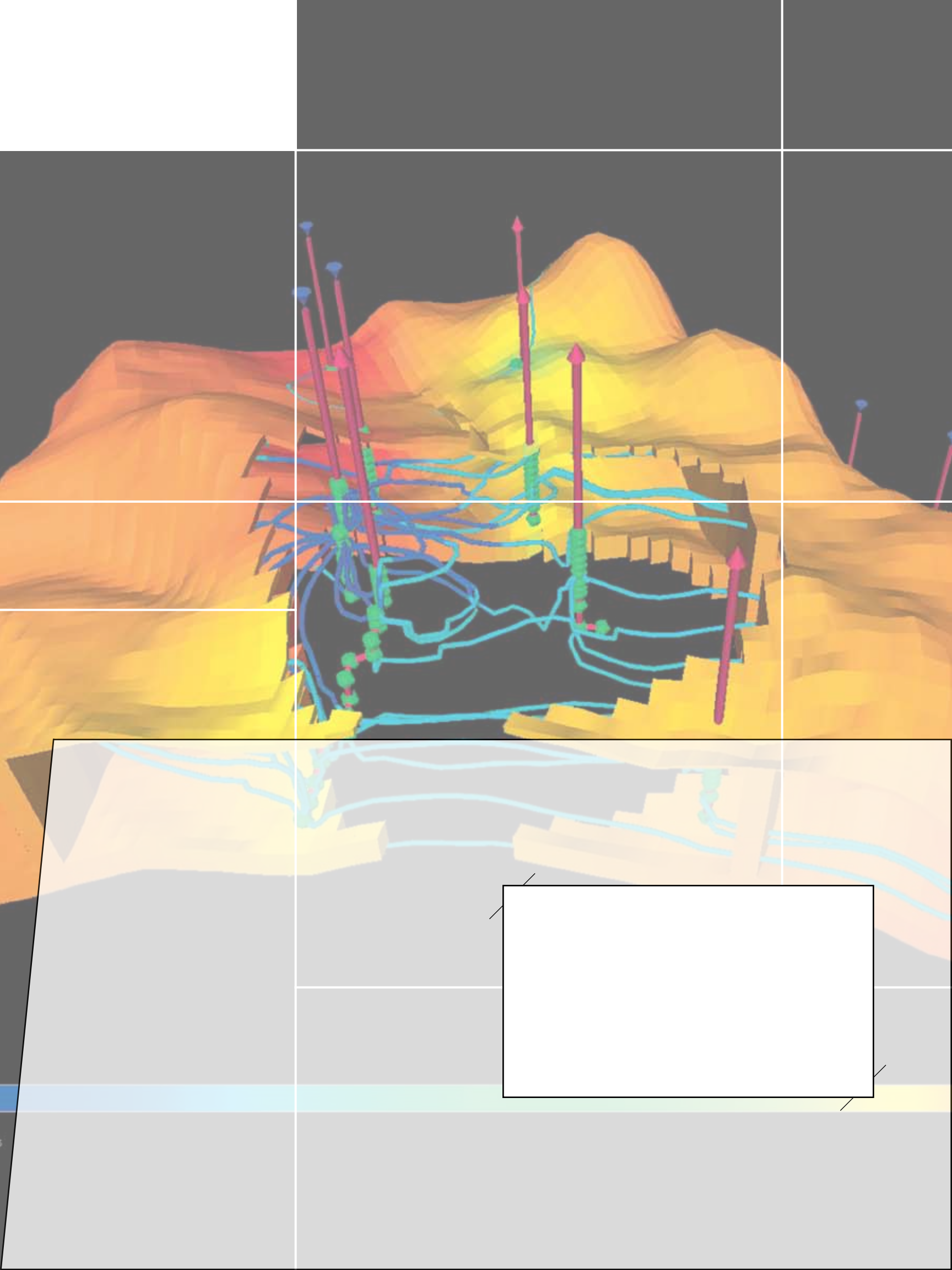


Our training professionals are typically located in the same geographic region as our customers. Instructors work closely with members of the client's local support team, ensuring that the training is relevant to each client's particular needs. When necessary, our training centers can leverage our international expertise and pool of trainers to accommodate local needs or special requests.

Courses encompass our entire software offering: reservoir characterization, reservoir engineering, drilling, production operations, economics and reserves, and information management (IM).

**To Learn More:**

Visit us on the Web at [www.slb.com/training](http://www.slb.com/training). Here you can browse our course catalog, register for public classes, and contact a local training center to discuss specific needs.



# SIS Education Services

## SIS Education Services Contacts

### **NORTH AND SOUTH AMERICA**

**Argentina: Buenos Aires**

E-mail: sis-abc-training@slb.com

**Brazil: Rio de Janeiro**

E-mail: trainingbrasil@slb.com

**Colombia, Ecuador, Peru**

E-mail: pce-sis-training@slb.com

**Canada: Calgary**

E-mail: training-calgary-sis@slb.com

**Mexico: Mexico City and Villahermosa**

E-mail: sistrainingmexico@slb.com

**Trinidad**

E-mail: sis-caribbean-training@slb.com

**United States: Houston**

E-mail: training-houston-sis@slb.com

**Venezuela: Caracas, El Tigre, Maracaibo, and Puerto La Cruz**

E-mail: curso@slb.com

### **EUROPE, RUSSIA AND AFRICA**

**France: Paris and Pau**

E-mail: sis-training-france@slb.com

**Nigeria: Port Harcourt/Lagos**

E-mail: sis-train-nga@slb.com

**Norway: Oslo and Stavanger**

Oslo e-mail: oslotraining@slb.com

Stavanger e-mail:

trainingcenter@slb.com

**Russia: Moscow and Tyumen**

E-mail: sis-rsg-training@slb.com

**UK: Aberdeen and Crawley**

E-mail: uksistraining@slb.com

### **MIDDLE EAST AND ASIA PACIFIC**

**Australia: Adelaide and Perth**

Adelaide e-mail: adelaide-training@slb.com

Perth e-mail: perth-sis-training@slb.com

**China: Beijing**

E-mail: sis-beijingsupportcen@slb.com

**Egypt: Cairo**

E-mail: training-cairo@slb.com

**India: New Delhi**

E-mail: sistraininginm@slb.com

**Indonesia: Jakarta**

E-mail: training-jakarta-sis@slb.com

**Japan: Tokyo**

E-mail: trainingcenter-japan@slb.com

**Malaysia: Kuala Lumpur**

E-mail: klctc@slb.com

**Qatar: Doha**

E-mail: sis-training-qatar@slb.com

**UAE: Abu Dhabi**

E-mail: sistraining@slb.com

### **SCHLUMBERGER INFORMATION SOLUTIONS**

Schlumberger Information Solutions (SIS) is an operating unit of Schlumberger that provides software, information management, IT, and related services. SIS collaborates closely with oil and gas companies to solve today's tough reservoir challenges with an open business approach and comprehensive solution deployment. Through our technologies and services, oil and gas companies empower their people to improve business performance by reducing exploration and development risk and optimizing operational efficiencies.

**E-mail [sisinfo@slb.com](mailto:sisinfo@slb.com) or contact your local Schlumberger representative to learn more.**

[www.slb.com/training](http://www.slb.com/training)

**Schlumberger**