

Well operations reporting

Effectively use your data

You need accurate and complete drilling information to manage and optimize well operations. The core solution is a fast, simple-to-use data-capture system that ensures your wellsite supervisors receive all the critical information they need quickly and easily.

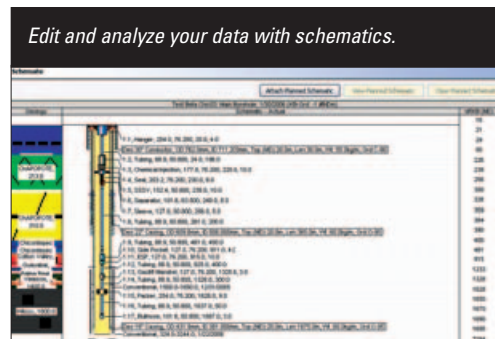
With Osprey* Reports well operations daily reports, you get more than a morning report; you get a well operations management tool that represents a step change in performance for drilling, completion, and workover operations. This software maximizes the usefulness of daily reports—optimizing operations and helping you anticipate and avoid costly problems.

With this comprehensive data model, the drilling engineer in your office can track key performance indicators (KPIs), compare actual results with the operational plan, and track and manage drilling costs. When planning future drilling projects, your drilling engineering team can effectively use accumulated drilling knowledge to more accurately predict costs and prevent trouble.

Fast, flexible data capture at the rig

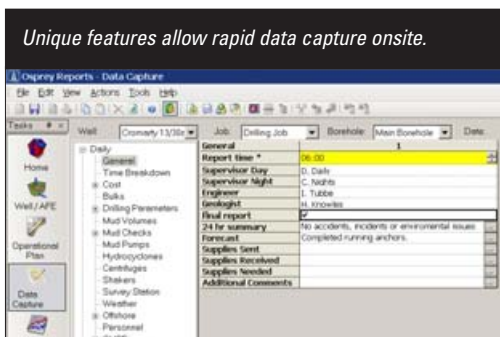
With other data-capture software, your wellsite supervisors may spend far too much time—often up to two hours—compiling their daily

reports. This valuable time could be better spent managing rig operations. Drilling proceeds faster and with fewer problems when a supervisor can actively manage moment-by-moment drilling progress on the rig floor. Osprey Reports is specifically designed to allow completion of daily reports in 30 minutes or less, using key features, such as selective copy-forward that eliminates the need to retype previously entered data, and customized pick lists that reduce tedious data-entry tasks.



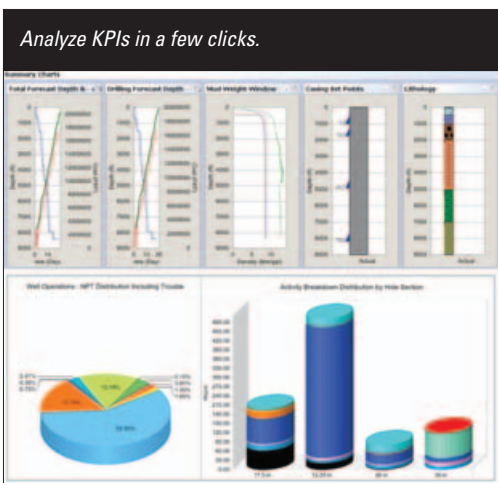
Osprey Reports is flexible: customize your data-entry screens, unit systems, or hardcopy-ready reports to support local workflow needs. Required data items are highlighted in the user interface and you can hide unnecessary items to simplify navigation and speed data capture. The wellbore schematic diagram links with well-data entry screens for immediate quality control and editing as data is entered. It's easy to customize the templates, create new reports that draw attention to significant information, or recreate your own proprietary reporting formats. Reports can be saved in Adobe® Acrobat® PDF or Microsoft® Word format for rapid distribution.

Get more than a morning report; get a complete well operations reporting system for drilling completions and workover operations. Osprey Reports frees up your supervisor's time for rig supervision and enables them to avoid costly drilling problems. Its comprehensive performance analysis tools help diagnose and prevent problems in your drilling projects—today, tomorrow, and into the future.



Osprey Reports

Well operations reporting



Rapid data analysis at the office

The drilling engineering team in your office needs accurate reports with comprehensive daily drilling information—as soon as possible. Your team can quickly chart drilling progress relative to the operational plan, track time and costs, manage QHSE incidents, and perform additional analyses to optimize drilling operations. In addition, you can link the comprehensive authorization for expenditure (AFE) application to multiple drilling projects to track costs of even the most extensive drilling campaigns.

Osprey Reports provides wide-ranging analysis capabilities:

- track productive versus nonproductive time (NPT), as well as nonoptimum times
- investigate the distribution of NPT categories
- evaluate drilling, cementing, logging, and other activities for the entire well or by individual hole section.

Database synchronization and security

Osprey Reports includes an easily maintainable database that allows multiple users to access data simultaneously and supports rapid, robust data synchronization between offices and

wellsites. The secure database supports access control—user profiles define individual user-access privileges. The data model includes information for the entire well life cycle, from planning drilling operations through executing final plug and abandon operations.

Drilling engineers need additional capabilities to analyze an existing well in the context of other relevant wells in the field or basin. Integration with the DrillDB* drilling information management system supports additional analysis to compare operations with other relevant wells.

SIS drilling software suite integration

These applications are integrated with Osprey Reports to provide a complete solution for your operations.

- Osprey Risk for rapid well planning and risk evaluation complements AFE forecasting software to formulate operational plans consistent with Osprey Reports.
- DrillDB operations performance analysis system, paired with the advanced drilling package function on the DecisionPoint* operations management system, allows you to create management overviews, multiwell and multiproject comparisons, and deep data analysis.
- Drilling Office* workflows support detailed well engineering design.

Schlumberger Information Solutions

Schlumberger Information Solutions (SIS) is an operating unit of Schlumberger that provides consulting, software, information management, and IT infrastructure services to support the core operational processes of the oil and gas industry. SIS enables oil and gas companies to drive their business performance and realize the potential of the digital oilfield. SIS is on the Internet at www.slb.com/sis.

Schlumberger

Key benefits

- Requires less time to fill in reports, enabling you to spend more time watching operations
- Uses a simple, familiar interface, with customizable language and report formats, reducing mistakes and eliminating the learning curve
- Benchmark results from current wells against offset wells, allowing you to repeat past successes

For more information contact your local SIS office or e-mail sisinfo@slb.com.



www.slb.com/sis