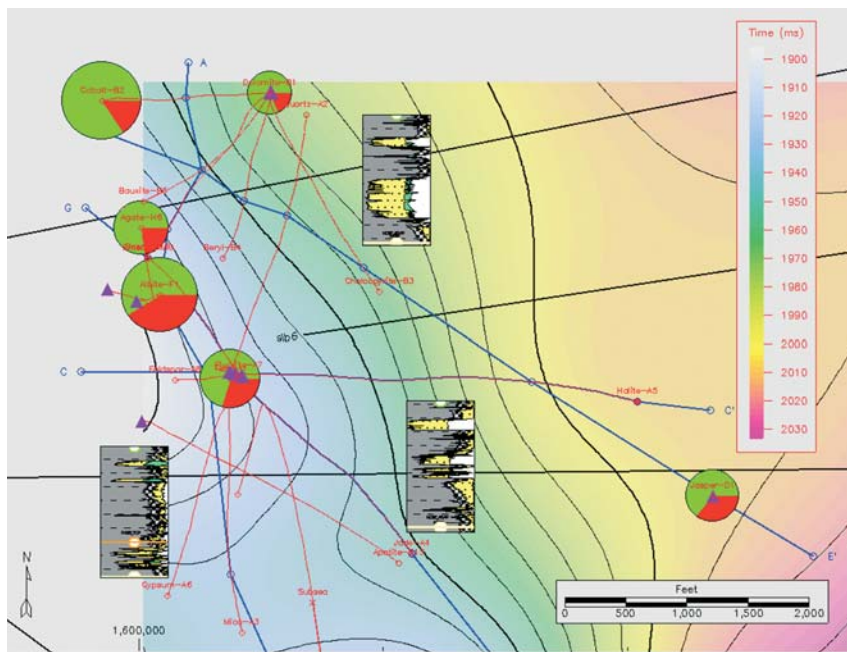


## PROJECT DATA MANAGEMENT

Millions of dollars are spent annually by the exploration and development sector to acquire seismic, drilling, wireline, and production information. With real-time data capture, the amount of data has increased significantly. Thus, data management tools are essential to effectively managing and providing all the information available to your interpretation teams.

The Project Data Management module, with real-time collaboration and increased security, is the foundation of the GeoFrame® integrated reservoir characterization system. The underlying architecture enables users to develop multidisciplinary collaborative workflows, use real-time data updates in all applications, and reduce exploration and development cycle time while lowering risk. Your data are always current, even when they are being shared across projects.

Powerful spreadsheet data managers provide instant access to your data from any interpretation application. With application interconnectivity, data can be sent instantly between windows and applications. The GeoFrame database is automatically updated as new data are input, so all users immediately have access to the most up-to-date information, irrespective of the application they are using.



### Data access and security

Increased access to data requires increased security. The GeoFrame system has exceptionally secure access to a comprehensive data store with security control from the project level down to the data item level. Using the Access Rights Manager™ application, you control who can update your interpretations, thereby protecting the integrity of your work.

The screenshot shows the 'Access Rights Manager' application. It features a grid of users and projects with access rights (Update and Delete) for each. The grid is as follows:

	Inx1	demo1	Read Only	Public
Inx1	U D	U D	U D	U D
demo1	U D	U D	U D	U D
elen	U D	U D	U D	U D
foliver	U D	U D	U D	U D
swp01	U D	U D	U D	U D
wmartins	U D	U D	U D	U D
Default	U D	U D	U D	U D

The application also includes buttons for 'Data Ownership...', 'Print...', 'Add/Remove Access Rights...', 'OK', 'Apply', 'Reset', 'Cancel', and 'Help'. A note at the bottom states: 'Set the Update (U) and Delete (D) rights for this column's data owner.'



### Data consistency

The GeoFrame system has a rich set of tools to ensure your working project data are consistent, and it takes the extra step of health-checking your Oracle® database using the Project Management ToolKit™ application. There are comprehensive and intuitive query tools, and match-and-merge rules, all ensuring incoming data integrity.

### Interpretation modeling

In recent years, there has been a vast expansion in the volume of seismic data contained within a project. More types of seismic data are available—3D, 4D, and 4C—and many projects have multiple versions of the same survey. Angle stacks are commonly used to look at amplitude variation with offset (AVO) effects in exploration, while monitoring fluid fronts in producing fields is achieved by time-lapse 4D surveys.

The Interpretation Model Manager™ application is used to collect interpretations, including horizons, faults, and boundaries, under a single name. By grouping interpretation data under a single name, access to and use of these data by everyone in the asset team are simplified. You now need only to enter the model name, and your team members will automatically be pointed to the data with which you most recently worked.

### Instant access to latest log curves

The Log Curve Preference™ system enables users to automatically gain access to and view the latest version of curves loaded into the GeoFrame system. You can easily create a list of preferred log curves to employ in petrophysical or geological applications. The result is a significant time savings when querying for curves in log displays, data functions, or applications.

### Benefits

Because the enterprise demands that reliable exploration and development information be available to the asset team, a centralized database is an indispensable resource. The GeoFrame data management system provides layers of confidence, privacy, and security above those provided solely by the operating system. The organization of the data stored in the GeoFrame system makes it easy to search for and retrieve the data you need, when you need them. Backups and restores are easily performed.

Multiple users can access data simultaneously and be confident that they will not overwrite someone else's interpretations. Data redundancies and inconsistencies are reduced, and data management worries can be eliminated by using the GeoFrame intelligent workflows.

[www.oilfield.slb.com/geoframe](http://www.oilfield.slb.com/geoframe)

