



GeoFrame GeoViz



64-bit GeoViz on Linux

Benefits:

- The latest GeoFrame on Linux release brings 64-bit GeoViz to work with seismic volumes that exceed two gigabytes.
- The first industry solution to use the Xeon EM64T processor-based system, which means faster volume rendering of more data at a lower price.
- GeoViz customers may now work with larger volumes of data within current G&G workflows for a more detailed interpretation of the reservoir.

Industry challenges in seismic interpretation

Oil companies need to incorporate some regional geological and geophysical understanding into their prospect generation or handle multiple attribute datasets for their field appraisal and development planning. As such, they are required to interpret larger areas of seismic data in order to obtain the bigger picture.

The 64-bit solution

To address this, Schlumberger Information Solutions (SIS) has implemented a 64-bit version of GeoViz® 3D interpretation and visualization application. This allows GeoViz on Linux users to utilize larger volumes for more accurate field appraisal and development planning.

GeoFrame® 4.1.1. integrated reservoir characterization system is the first industry solution to use the Intel® Xeon™ EM64T® processor, allowing for the capacity to work with seismic volumes at a lower price.

GeoViz users can now work with larger volumes of data—up to about 10 gigabytes—within current geology and geophysics (G&G) workflows at a very low price compared to traditional UNIX® hardware.

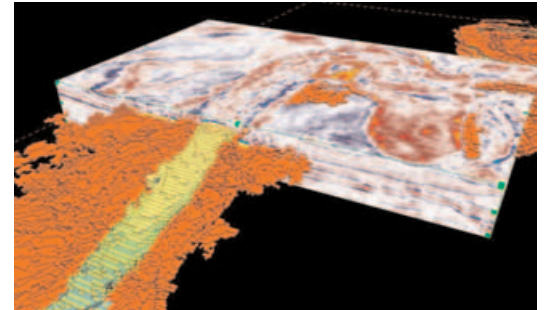
GeoViz with GigaViz

For interpretation of seismic volumes larger than 10 gigabytes, utilize GigaViz™ scalable, cluster-based visualization, interpretation, and attribute analysis software in conjunction with GeoViz. GigaViz takes advantage of Linux cluster technology to bring you the speed and performance for analyzing massive volumes of seismic data at the basin scale.

GigaViz and GeoViz complement each other in the seismic interpretation workflow and provide the seamless integration required within the industry today for hydrocarbon prospecting and the generation of exploration prospects. Go beyond your current memory limitations and still utilize all the seismic data available to you.

Certified hardware and graphics support

GeoViz 64-bit is certified on Dell® and HP® workstations with the Xeon® EM64T processor and the Sun® Java® workstations with the AMD® Opteron™ processor.



GeoViz voxel picking used to detect two channels within a deep-water dataset. (Image courtesy of WesternGeco.)

GeoViz requires the Linux operating system Red Hat® Enterprise® WS 3.0® update 2.

GeoViz supports the new PCI Express® bus, which doubles the AGP8X bandwidth—up to eight gigabytes per second. This brings significant improvements in GeoViz performance. The nVIDIA® Quadro® FX-3000®, Quadro FX-4000®, and the new PCI Express based nVIDIA® Quadro FX-3400® graphics card are certified to work with GeoViz®.

Schlumberger Information Solutions

GeoViz, GigaViz, and GeoFrame are licensed and supported by Schlumberger Information Solutions. SIS is an operating unit of Schlumberger that provides consulting, software, information management, and IT infrastructure services to support the core operational processes of the oil and gas industry. SIS enables oil and gas companies to drive their business performance and realize the potential of the digital oilfield. SIS is on the Internet at www.sis.slb.com.

Contact your local SIS office or e-mail: sisinfo@slb.com for more information.



www.sis.slb.com

November 2004 04-IS-456

GeoFrame and GeoViz are registered trademarks of Schlumberger. GigaViz is a trademark of Schlumberger. All other marks are registered trademarks of third parties. The i logo, and i enabled and design are service marks of Schlumberger. © 2004 Schlumberger Information Solutions. All rights reserved. Produced by Marketing Communications, Houston