



# GeoFrame GeoViz



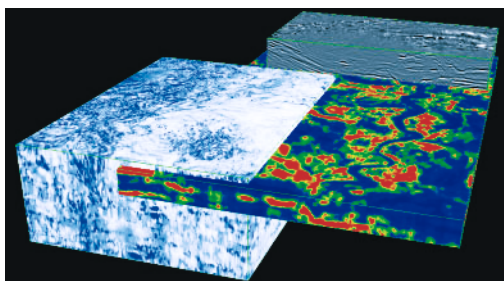
## Using 3D interpretation tools is now routine

### Benefits:

- Runs on a wide variety of platforms and machines, which gives you flexibility in hardware choices.
- Seamless access to data types to speed up interpretation.
- Makes the most of your 3D spatial awareness to improve your interpretation and catch mismatches earlier.
- The GeoViz application protocol interface (API) means you can plug in value-adding software modules, such as SEA 3D<sup>†</sup> from Foster Findlay Associates Ltd. (ffA) to enhance data understanding and improve accuracy of interpretations.

### Improving interpretation workflow

Many companies use GeoViz<sup>®</sup> 3D interpretation and visualization to improve their interpretation workflow and reduce interpretation cycle time.



*Multiple volume probes in GeoViz for fast and easy attribute and structural analysis.*

### GeoViz availability

GeoViz is the most versatile 3D interpretation application in the exploration and production (E&P) industry today that runs on a wide variety of platforms and hardware types.

- Available on Sun UNIX<sup>†</sup> workstations from the Ultra Sparc<sup>†</sup> range to the Blade<sup>†</sup> range, and running well on desktop machines with one gigabyte of RAM up to large visualization center machines across multiple screens and large amounts of memory.
- GeoViz can utilize Xinerama<sup>†</sup> on Sun XVR-1000<sup>†</sup> and later graphics cards, or doublewide mode on XVR-4000<sup>†</sup> graphics cards for increased resolution on large screens.
- Available on SGI UNIX workstations from the Octane<sup>†</sup> series to the Onyx<sup>†</sup> series. Again, from the desktop range with around one gigabyte of memory to the visualization center range with tens of gigabytes of memory.
- GeoViz is available over the Intranet through a Web browser via the Schlumberger LiveQuest<sup>®</sup> application provider service (ASP). This brings the ultimate flexibility and enables you to run GeoViz on your desktop PC.
- GeoViz is fully OpenSpirit<sup>†</sup> platform independent framework enabled for all well and 3D seismic data, which means that you can run GeoViz on industry standard databases—GeoFrame<sup>®</sup> integrated reservoir characterization system or OpenWorks<sup>†</sup> and have seamless access to data.

### GeoViz—who is using it?

More than 2500 interpreters are using GeoViz today in companies ranging from mega majors to independents, and major resource holders to small consultants. Users see its value in its flexibility and its integrated interpretive access to the largest range of data types.

Download customer case studies at <http://www.sis.slb.com/content/software/success/index.asp>

These testimonials come from customers having successfully utilized GeoViz to streamline their interpretation and make better usage of all the GeoFrame modules by working in a 3D canvas.

Some examples include:

Norsk Hydro—unraveling complex fault patterns

Santos—GeoViz helps to accurately quantify reserves

### About GeoQuest

GeoViz is licensed and supported by GeoQuest, the software division of Schlumberger Information Solutions (SIS), an operating unit of Schlumberger Oilfield Services. SIS is the global industry leader for the supply of integrated business solutions comprising GeoQuest software, information management services, information technology and a complete range of expert services. Schlumberger—the leading supplier of services and technology to the international E&P industry—operates offices, service locations, and research and development facilities around the world.

Call your local Schlumberger office or e-mail: [sisinfo@slb.com](mailto:sisinfo@slb.com) to try GeoViz.

[www.sis.slb.com](http://www.sis.slb.com)

©Registered trademark of Schlumberger \*Mark of Schlumberger. †Mark of a third party.  
© 2003 Schlumberger Information Solutions. All rights reserved. SIS\_03\_0022\_0