

MetaCarta GeoSearch Energy

Location-based intelligence for the energy industry

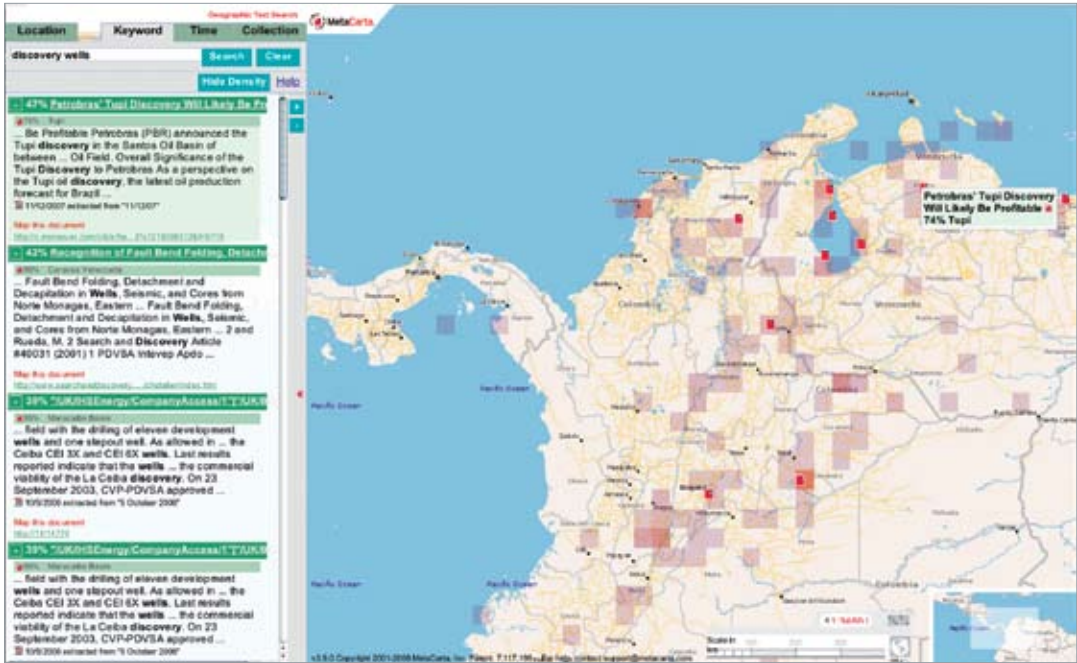
Managers, geoscientists, and new venture team members search the public Web daily to retrieve pertinent information for activities such as new area reconnaissance, competitive analysis, environmental awareness, and geopolitical understanding.

MetaCarta® GeoSearch Energy offers a simple and efficient way to discover Web-based energy-related intelligence. The service supplements the internal data generally used to make critical business decisions within an organization.

MetaCarta has amassed more than 4,000 sites targeting industry information in the GeoSearch Energy index to serve as a critical resource for energy industry researchers and analysts. The value of the index is that it enables users to search industry-specific content in a manner that is geographically relevant to their interests and needs.

GeoSearch Energy INDEX

GeoSearch Energy is a proprietary index of more than 9 million public Web pages that have been identified by MetaCarta as containing content relevant to the energy industry. The index is searchable by MetaCarta's GTS geOdrive™ technology. Organizations that are licensed to use MetaCarta GTS geOdrive can subscribe to GeoSearch Energy on an annual basis. The index is centrally hosted and maintained at MetaCarta and easily accessed via the aggregated-search feature of the GTS geOdrive system.



MetaCarta interface.

GeoSearch Energy source Web sites include

- energy companies
- energy industry associations and trade groups
- market analysis and business intelligence companies
- energy industry news
- industry suppliers and service companies
- energy data vendors
- consulting companies
- universities and colleges
- government agencies.

GeoSearch Energy subscribers may submit suggestions to MetaCarta for content sources they would like to see included in the index.

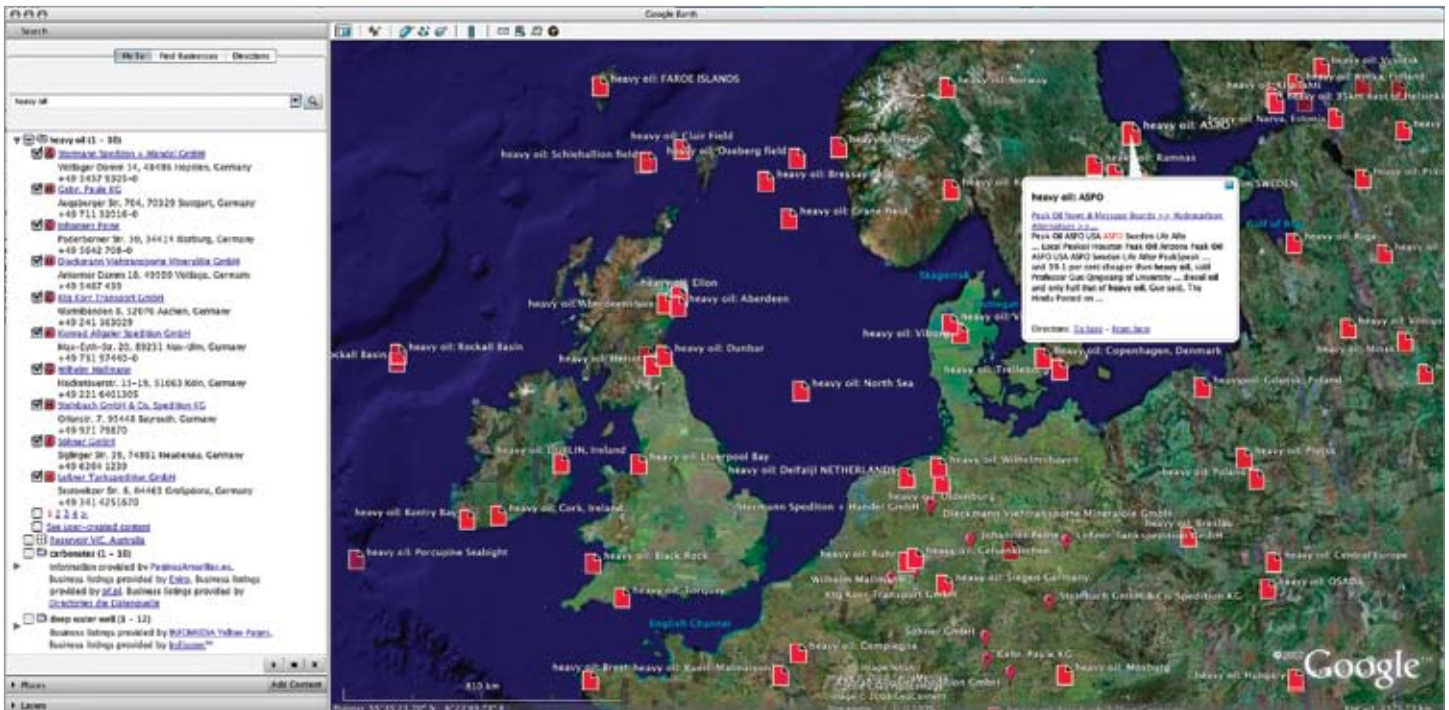
GeoSearch Energy WEB

MetaCarta applies natural language processing (NLP) to unstructured text documents to discover geographic references. The geoparsing process relies on the MetaCarta Data Module to resolve latitude, longitude, and accuracy for

- explicit location names and landmarks (e.g., towns, cities, states)
- implicit location references (e.g., 40 miles west of Boston, Massachusetts)
- latitude/longitude formats
- Universal Transverse Mercator (UTM) grid information.

GeoSearch Energy AGGREGATION

Current MetaCarta GTS geOdrive customers can aggregate to the GeoSearch Energy service. Search queries executed against GeoSearch Energy will produce results identical in form to other GTS geOdrive queries. When the GeoSearch Energy collections are searched simultaneously with internal collections, the results from GeoSearch Energy will be combined with the results from the other collections in order of query relevance.



MetaCarta in action with Google Earth™

TECHNICAL SPECIFICATIONS

GeoSearch Energy contains hundreds of thousands of documents in each of the following professional categories:

- petroleum exploration
- oil and gas business
- exploration geophysics
- petroleum geology
- petroleum engineering
- drilling.

In addition, GeoSearch Energy contains tens of thousands of documents each in areas such as stratigraphy, petrophysics, coal and mining, sedimentology, and so on.

SUMMARY

- Researching thousands of Web sites for the right study or report can take an exploration professional hours or days.
- Finding all the right information in a single search can save significant time and money, allowing geoscientists to make informed decisions.
- Enabling search of external Web resources in conjunction with internal documents combines all results in order of query relevance.
- Having as much information as possible about geographical locations is essential to oil and gas economic viability.
- The accuracy of the information retrieved using the MetaCarta geographic intelligence feature provides a high level of assurance for research activities.

SCHLUMBERGER INFORMATION SOLUTIONS

Schlumberger Information Solutions (SIS) is an operating unit of Schlumberger that provides software, information management, IT infrastructure, and consulting services. SIS enables oil and gas companies to achieve breakthrough team performance, unlocking the potential of E&P teams to step-change their effectiveness and productivity. Through our technologies and services, oil and gas companies can drive business performance and realize the potential of the digital oil field.

Schlumberger is the exclusive distributor for the oil and gas sector of the MetaCarta map-based geographic information search technologies from MetaCarta, Inc.

E-mail sisinfo@slb.com or contact your local Schlumberger representative to learn more.

www.slb.com/sis