

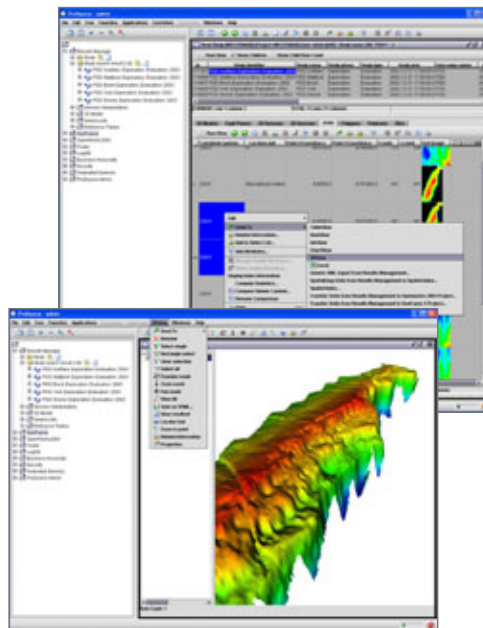
# ProSource Results Workflow Extension

Capture interpretation results, data, and knowledge at important milestones throughout the life of your reservoir

## FEATURES

- **GIS viewer**—study outlines, horizons, and grids are displayed in the GIS Viewer, along with support for all your cultural and navigation data such as wells, deviation surveys, licenses, and interpretation project outlines.
- **Quality control attributes**—specific attributes are used to enhance the knowledge management of your assets. Attributes such as quality level, interpreter comments, and dates help narrow future searches.
- **Updating study data**—a study does not mean static data; as a project progresses, studies capture the up-to-date results and knowledge.
- **Security and entitlements**—all results information, quality, and contextual attributes are secured and entitled on a record-by-record basis.
- **Multidiscipline and multidomain**—ProSource\* Results Workflow Extension supports results from multiple sources across various domains. It can be used to integrate results from exploration, drilling, and production, including geophysical interpretations, geological models, and reservoir engineering simulations.

Your exploration team has reached a milestone in its interpretation project; the recommendation to drill has been made. The team would like to capture the current knowledge, data, and interpretation results that support the decision to drill. Is there a system that can manage this information?



*The ProSource Results Workflow Extension provides effective browse, review, and manage functionality integrated with your data management workflows.*

ProSource Results Workflow Extension captures interpretation results in the context of a business decision or project milestone. At significant decision points in a project, you can create a snapshot or study of current results and data, together with the business context of the milestone. Results can be uploaded from a range of interpretation applications. ProSource Results Workflow Extension allows you to annotate the study, set quality tags, and capture details about the interpretation process. The study is further augmented with maps, reports, and documents that support the decisions made at these milestones.

## KEY BENEFITS

- Enables you to make better business decisions by using reliable project milestone information that is easy to access and share
- Safeguards your investment in previous interpretations by ensuring that results can be reused
- Helps you avoid costly delays and setbacks that may result from lost knowledge and uncertainty about data quality

## CREATING STUDIES

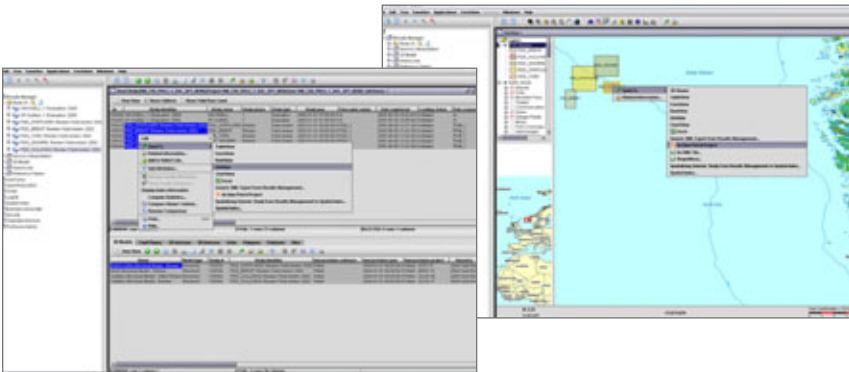
A ProSource Results Workflow Extension study is a container for the information, context, and supporting data used at business decision points such as licensing rounds, prospect generation, drilling recommendations, and investment or divestment reviews.

The information included in a study can be sourced from different repositories. ProSource Results Workflow Extension provides the tools required to upload interpretation results and add the relevant quality and context information for each piece of interpretation.

When creating new interpretation projects, you can quickly and easily review the results from previous project milestones in the ProSource Results Workflow Extension. Data viewers allow you to preview the data, understand the quality and context, select data, and deliver it to any supported interpretation application.

As a ProSource Results Workflow Extension user, you can review other information associated with the study such as maps, reports, presentations, spreadsheets, and reservoir simulation results. By linking documents with interpretation results, quality, and context, an asset team has a complete picture of the project, and can confidently use existing knowledge as the basis for future interpretations and analyses.





The user interface for creating studies in the ProSource Results Workflow Extension allows effective and rapid access to your previous interpretation results.

## ENSURING QUALITY AND CONTEXT

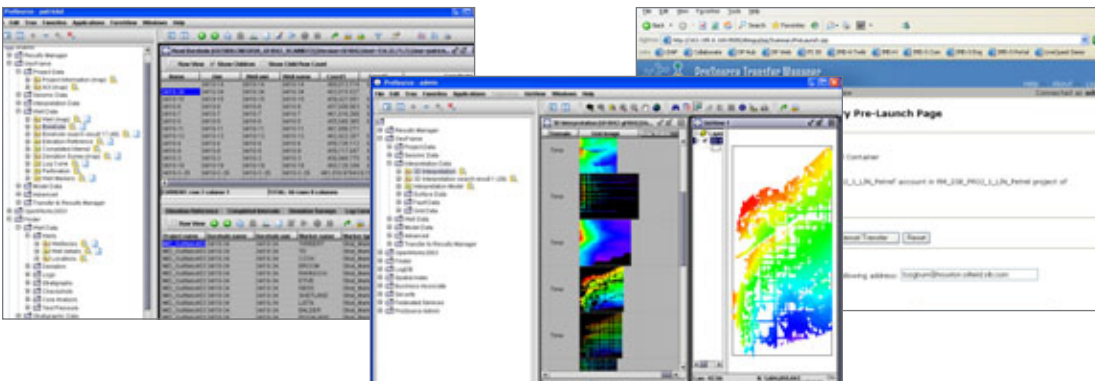
As interpreted results have significant human input, the context becomes critical for the understanding and reuse of this information. Without the context, there is limited understanding and often little reuse. Most geoscientists and engineers reinterpret data rather than reuse the results of other people, which causes a significant loss of time and knowledge invested in prior studies. ProSource Results Workflow Extension helps you define quality and context attributes with each piece of preserved information.

## SCHLUMBERGER INTEGRATION FRAMEWORK

The Schlumberger integration framework provides a common architecture with the following key elements:

- The new information management administration console allows user and entitlement management to be delegated to a common component.
- Users and roles are now shared with DecisionPoint\* enabling technology for E&P Web workflow solutions, simplifying the administration of both systems.
- An abstraction layer permits flexible integration with various enabling technologies—Web servers, application servers, and portal technologies.

Interpretation data selections are seamlessly loaded from or restored to interpretation projects with the ProSource Transfer Manager Web interface.



## USING VIEWERS

ProSource Results Workflow Extension data is accessible through three easy-to-use viewers:

- GIS viewer—supports the display of spatial data from multiple sources, including the public domain, to effectively view your results in the larger context
- Table viewer—displays header data and quality control attributes with effective tools for editing and creating data
- Form viewer—displays data relationships to allow effective navigation through and management of your data

Together, these utilities enable you to determine what data and information are available, understand the background and relevance of previously interpreted results, view the results, and deliver the data to the desired application for further analysis.

## SCHLUMBERGER INFORMATION SOLUTIONS

Schlumberger Information Solutions (SIS) is an operating unit of Schlumberger that provides software, information management, IT infrastructure, and consulting services. SIS enables oil and gas companies to achieve breakthrough team performance, unlocking the potential of E&P teams to step-change their effectiveness and productivity. Through our technologies and services, oil and gas companies can drive business performance and realize the potential of the digital oil field.

E-mail [sisinfo@slb.com](mailto:sisinfo@slb.com) or contact your local Schlumberger representative to learn more.

[www.slb.com/sis](http://www.slb.com/sis)

**Schlumberger**