

# StimMAP LIVE

Visualize your hydraulic fracture while it is created

## APPLICATIONS

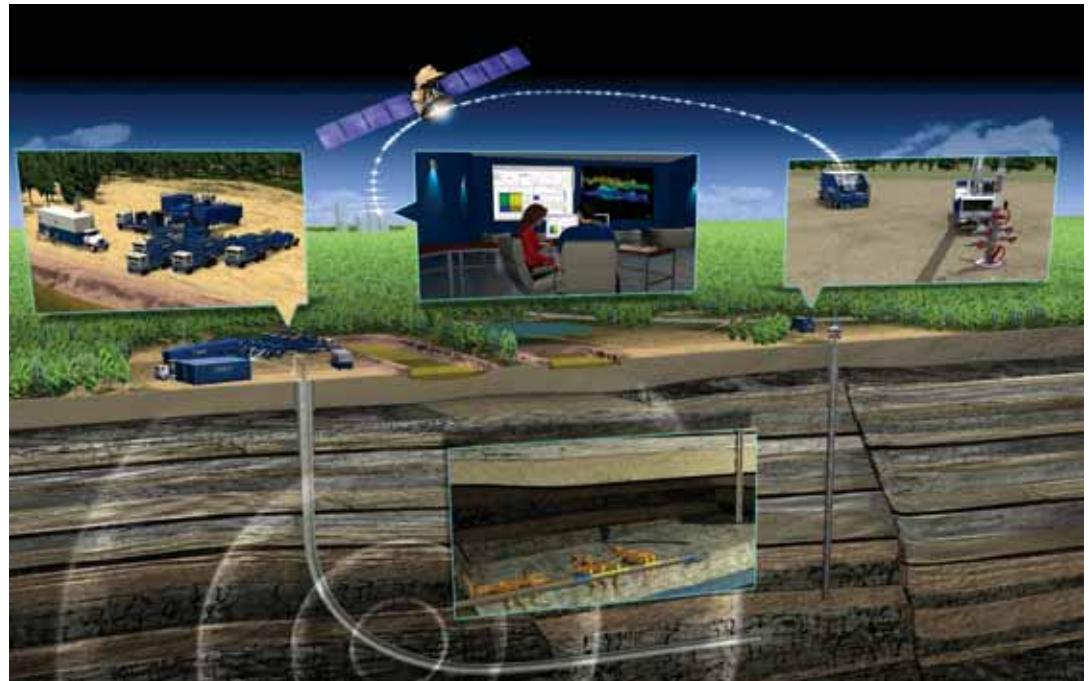
- Fracture mapping for exploration or development wells
- Refinement of fracture and reservoir models
- Confirmation of fracture placement

## ADVANTAGES

- Confirm real-time effective diversion
- Optimize fracturing operations costs
- Increase recovery by optimizing well spacing and placement

## FEATURES

- Confirmation of fracture design compliance
- Ability to refine number of fracture stages or perforation clusters
- Augmentation of traditional fracture measurements
- Validation of multizone fracturing success
- Calibration of fracturing modeling simulations
- Data acquisition to visualization in less than 30 seconds
- Automated computerized event detection and location
- Data transmission flexibility via the Web-based InterACT\* system



The StimMAP\* LIVE diagnostics service maps hydraulic fracture systems while they are created. Microseismic events triggered by the stimulation treatment are detected and automatically located in 3D space, relative to the well being treated. The StimMAP LIVE microseismic fracture mapping service delivers data while the fracture treatment is being pumped, with less than 30 seconds of lag time.

## ACCURATE FRACTURE CHARACTERIZATION

Microseismic fracture mapping provides imaging of the geometry of a hydraulic fracture. Accurately measuring the fracture geometry offers precise data on hydraulic fracture systems, which improves the accuracy of fracture jobs and increases

- production
- recovery
- return on investment.

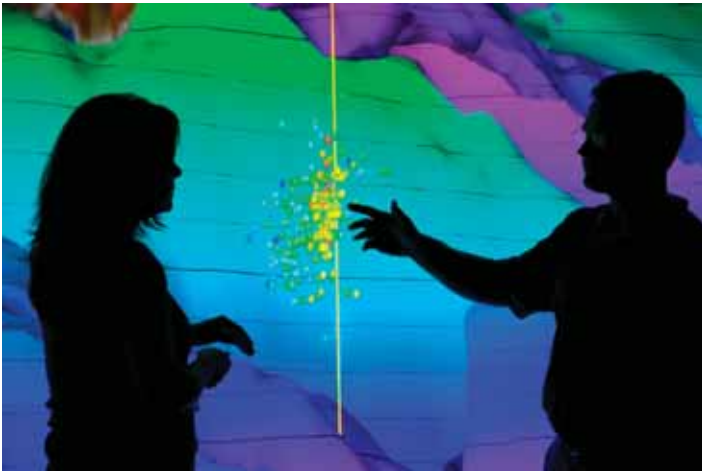
## REAL-TIME DATA

In the past, accurate microseismic fracture mapping results have taken many hours or even days to finalize because of the labor-intensive process of examining enormous amounts of seismic data. This process confirmed fracture design and improved stimulation on future stages or wells, but did not provide real-time data for current fracturing treatments.

The automatic microseismic detection and location process of the StimMAP LIVE service virtually eliminates the delay in obtaining fracture mapping results, allowing engineers to change fracture pumping procedures that improve the final geometry of the fracture. An increased understanding of the fracturing process in real time

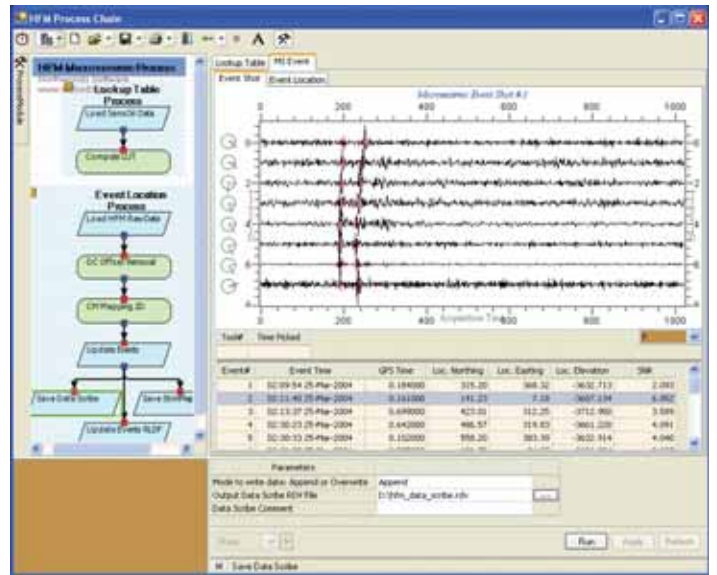
- reduces well stimulation costs
- optimizes field drilling plans
- allows changes in perforation strategies and plan diversion schemes to be made on the fly.

# StimMAP LIVE



## STAND-ALONE OR COMBINABLE SERVICE

Schlumberger provides StimMAP LIVE fracture mapping as a stand-alone service or in combination with other stimulation, monitoring, data acquisition, and production enhancement services. The suite of StimMAP services can be tailored to specific customer needs. This flexibility enables operators to deal with only one service provider on a project.



Microseismic workflow and components.

[www.slb.com/stimmap](http://www.slb.com/stimmap)

# Schlumberger