

Interval length	407 ft [124 m]
Well profile	High inclination
Bottomhole temperature	186 degF [85.6 degC]
Completion	Openhole gravel pack with zonal isolation

Background

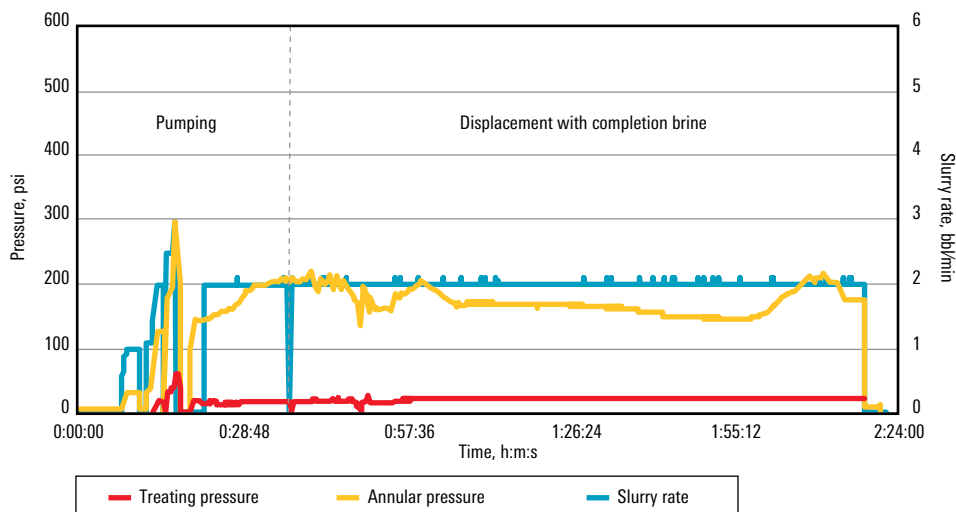
A customer installed OptiPac* Alternate Path openhole gravel-pack screens using fast oil-swellaible packers to separate zones and provide sand control. The swell packers were expanded prior to pumping the gravel-pack job. In previous wells where this strategy was deployed, diesel was spotted to swell the packers, which created a U-tube effect that incurred NPT to address. Other drilling challenges included drilling fluid contamination and well control concerns.

Technologies

- PRIMO-SWELL* oil-swellaible-packer activation system
- PRIMO-VIS* oil-swellaible-packer activation fluid viscosifier
- WARP DRY* high-density colloidal suspension technology
- OptiPac Alternate Path openhole gravel-pack screen

PRIMO-SWELL System Mitigates Well Control Issues and Improves Completion Efficiency, Asia

55-bbl system mixes on site in 3.5 hours and enables full packer swelling in less than 20 hours for optimized gravel packing



A batch mixer on location mixed the PRIMO-SWELL system formulated with PRIMO-VIS viscosifier for viscosity and WARP DRY technology as a weighting agent. A series of laboratory tests demonstrated the required performance to the customer, and no annulus pressure spikes or stability issues were observed during swell packer expansion.