

StarView

Simplifying wellsite information display

APPLICATIONS

- Configure UniConn controller and memory card through PC
- Download UniConn controller event log and configuration to a PC

BENEFITS

- Easier UniConn controller commissioning and set-up process, simplifying field operations
- Simplified data analysis and troubleshooting, improving ESP performance and run life
- Better well-data record keeping, enabling efficient storage and retrieval

FEATURES

- Displays in plain English—no code translation required
- Uses simple, intuitive software structure
- Enables access and control of UniConn controller data and input parameters via PC
- Allows configuration and event log data snapshot capture
- Time- and well-based data storage system
- Uses all UniConn controller configurations and modules
- Logs multiple data channels with variable-sample rates
- Uses a reader connected to a PC through a USB port to download data

StarView* wellsite display software enables the user to access the UniConn* controller from a personal computer (PC). Connection to a PC is made through the serial port on the controller's faceplate, using a standard DB-9 serial cable. While using StarView software is not mandatory to operate the UniConn controller, the software provides many advantages to field users. StarView software enables simple and easy access to all parameters of the UniConn controller, including all installed and configured expansion cards. All live data values, active and latched alarms, and event logs are viewed from the main screen. By selecting the window specific to the parameter category, a pop-up window is generated showing all the set-point and protection parameters related to those live values.

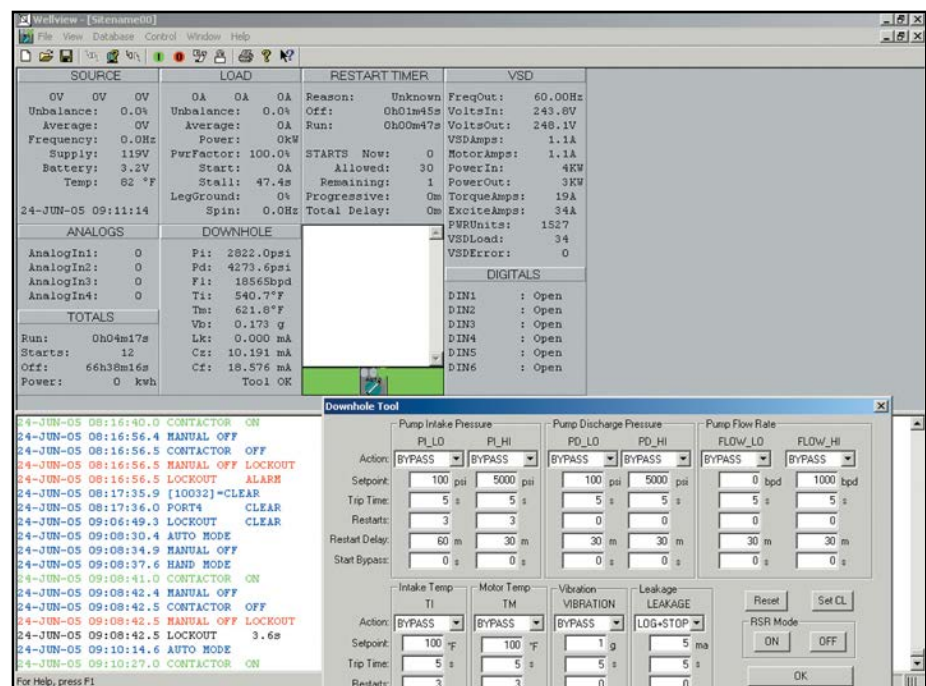
When a PC using the StarView application is connected to an operational UniConn controller, the displayed data are updated continuously. A snapshot of all current data, input

parameters, and event logs at certain points in time are captured in StarView software. This allows for analysis of the electrical submersible pump (ESP) operations.

The StarView software provides a powerful tool to help analyze well and equipment performances and failures. All stored data are organized by well name, providing efficient data storage and easy data search and retrieval.

Additionally, the StarView software simplifies field operations. By clicking one button, all of the controller's well commissioning and set-up process parameters can be preset in a controlled environment, stored in the software, and uploaded at the wellsite.

When closer analysis of well and equipment performance is required, a memory module is used in conjunction with the StarView software to log all continuous data acquired in the UniConn controller.



The main window of the StarView software displays a variable-speed drive (VSD) running. The pop-up window shows access for all of the parameter set-points of the Phoenix* sensor and the protection parameters.

StarView

The UniConn controller's memory module allows the operator to log up to 500,000 data points for up to 16 parameters in parallel. Each parameter is logged with a sampling frequency as high as one sample per second.

Sampling frequency is configurable for each parameter to minimize extraneous data and optimize file size for the intended application. This capability permits the UniConn controller to gather a large amount of data over a long time span, enabling detailed analyses of well and equipment performance.

For example, an overall data log of 8 parameters, sampled every 10 minutes for more than 1 year, can be stored in a single-memory module. Data acquired using a memory module can be downloaded and viewed with a PC using a USB port. This data can be viewed using the StarView software.



UniConn memory module and reader connected to a PC through USB port.

www.slb.com/al