

CPS-636

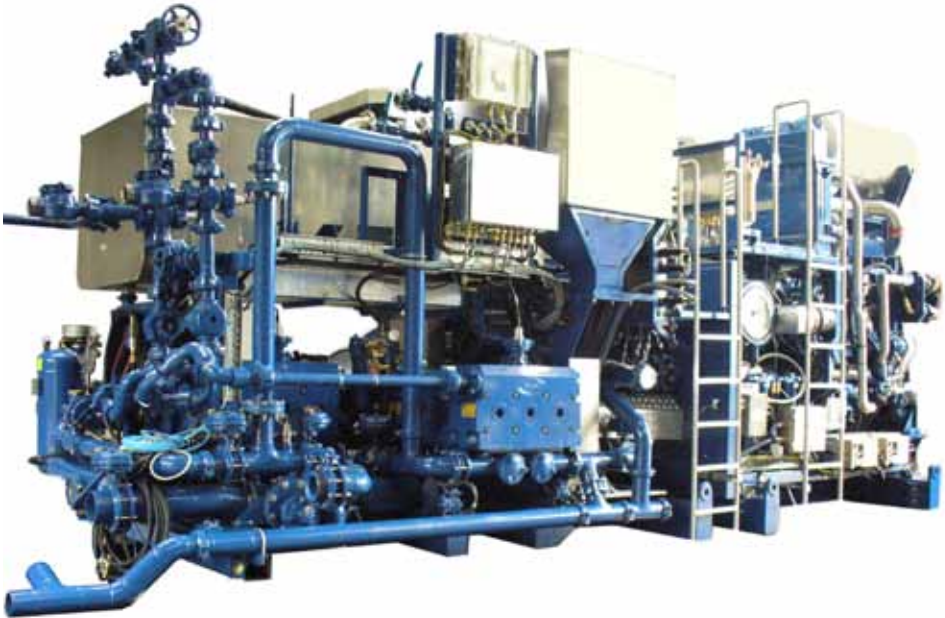
Offshore cement-pumping skid

APPLICATIONS

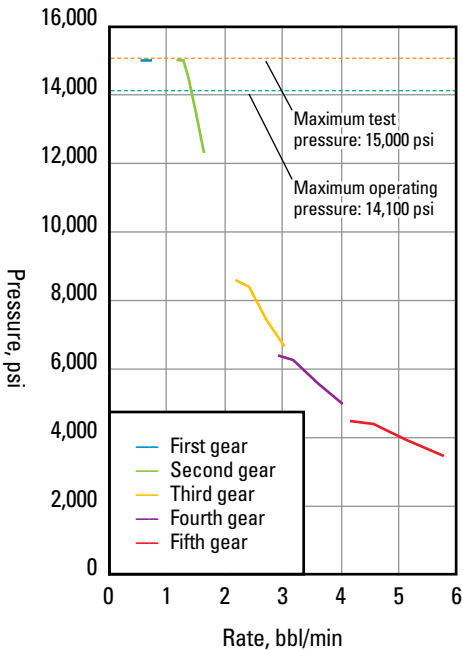
- High-pressure pumping
- Meters and pumps mixing and displacement fluids
- Recirculating cement

FEATURES

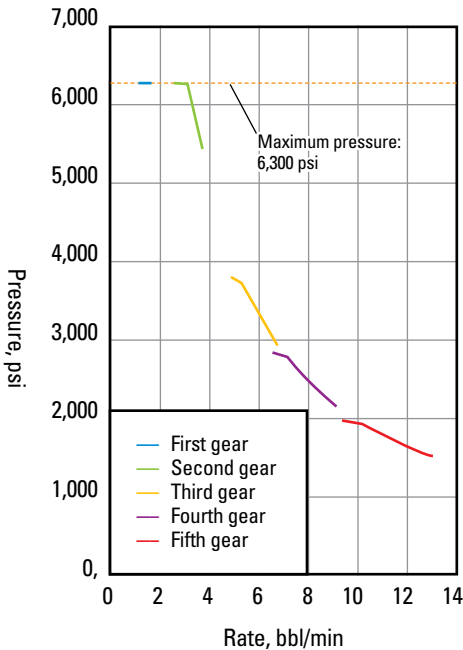
- Full system redundancies
- Direct-driven mixing pumps for improved reliability and efficiency
- Mark III SLURRY CHIEF* cement mixer with CBS-393
- Nonradioactive densitometer
- Advanced Cement Control (ACC) system
- Stainless steel displacement tanks
- Split skid with bullhead
- Full selection of fluid ends
- Pressurized packing lube systems
- Solids fraction monitoring
- Adjustable choke valve
- Compliance with Zone 2 hazardous area regulation
- ABS-CDS certification



The CPS-636 cement-pumping skid delivers high-pressure pumping services (up to 1,000 hhp) for offshore operations. Its split skid design with bulkhead allows installation of a sound reduction wall. The skid is equipped with the ACC data acquisition and monitoring system, which allows for precise control of slurry density.



CPS-636 performance curve (3-in plungers).



CPS-636 performance curve (4.5-in plungers).

CPS-636

Specifications

General

Engines	Two Detroit Diesel® Series 60®
Capability	419 kW [570 bhp] at 2,100 rpm
Transmissions	Two Allison® 4700 OFS
Cooling systems	Two remote radiators

Triplex pumps

Front	Dixie Iron Works MSI® TI-600
Plunger diameter	76 mm [3.0 in]
Maximum pressure	1,034 bar [15,000 psi]
Maximum pump rate	55 m ³ /h [5.8 bbl/min]
Rear	Dixie Iron Works MSI TI-600
Plunger diameter	114 mm [4.5 in]
Maximum pressure	434 bar [6,300 psi]
Maximum pump rate	124 m ³ /h [13 bbl/min]

Slurry mixing system

Model	CBS-393 mixing system with Mark III SLURRY CHIEF mixer
Volume capacity	6-bbl [0.72 m ³] mixing tub and 18-bbl [2.15 m ³] averaging tank per mixer
Maximum mixing rate	2,560 kg/min [60 sack dry cement/min]

Other

Discharge manifold	1,034-bar [15,000-psi] maximum working pressure
Displacement tanks	2 × 1,590-L [2 × 10-bbl] stainless steel 316
Compliances	EPA Nonroad Tier II/Euro Nonroad Stage II emissions Hazardous area Zone 2
Certification	ABS-CDS

www.slb.com/cementing