

## ACTive TC

### CT real-time tension and compression tool

#### APPLICATIONS

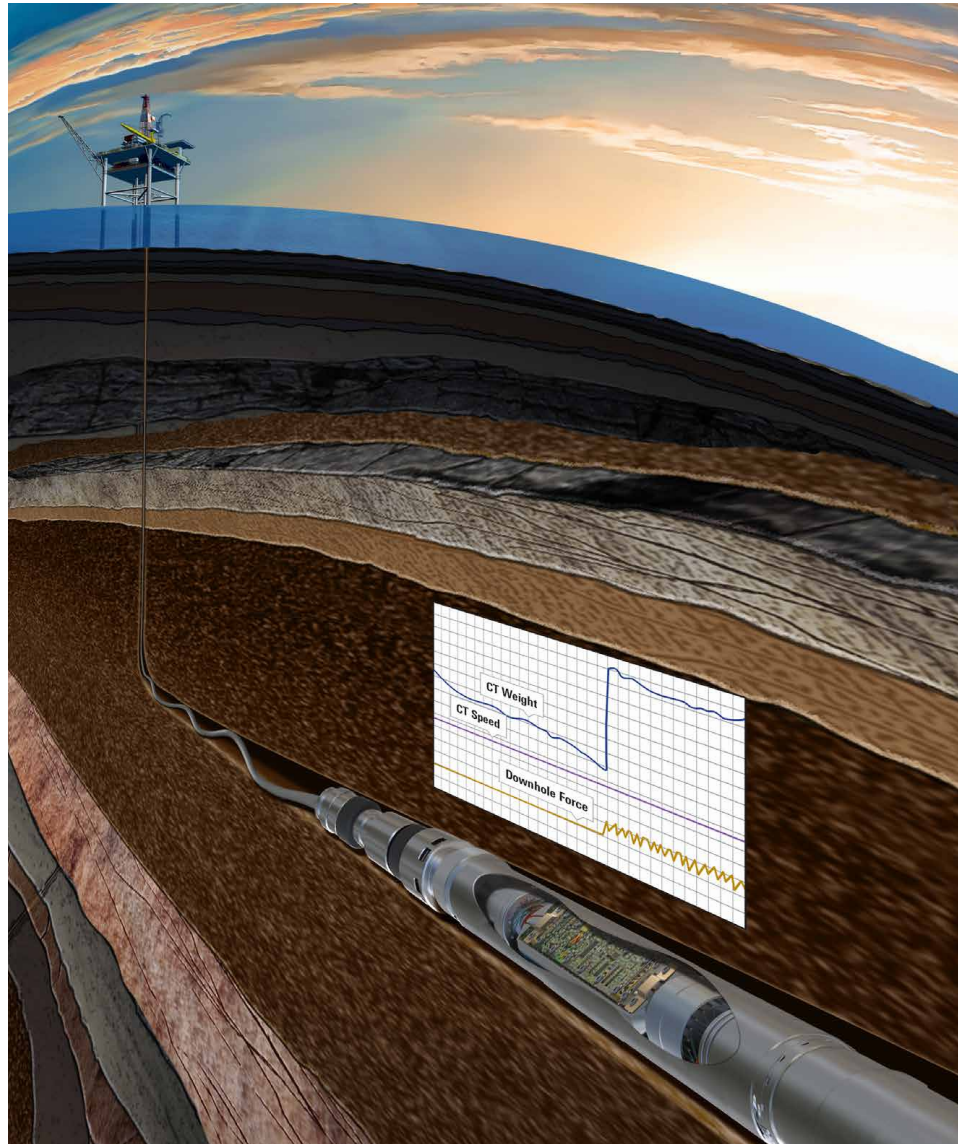
- Coiled tubing (CT) operations in deviated and horizontal wells
- Positive indication of latching or jar activation during fishing
- Confirmation of sliding sleeve activation
- Confirmation of completion hardware manipulation
- Positive indication of inflatable packer setting
- Indication of perforating guns firing

#### BENEFITS

- Greater efficiency and control
- Reduced risk of unsuccessful operations

#### FEATURES

- Downhole load and torque measurements in real time
- Robust design for use during perforating and fishing operations
- Pump-through capability to allow CT intervention in the same run
- Ball-drop capability through the tool for activation of tools below
- Plug-and-play combinability with enhanced ACTive\* real-time downhole coiled tubing services



*Tension and compression measurements in real time ensure shifting tools are properly engaged, and provide confirmation of shifting sleeve activation.*

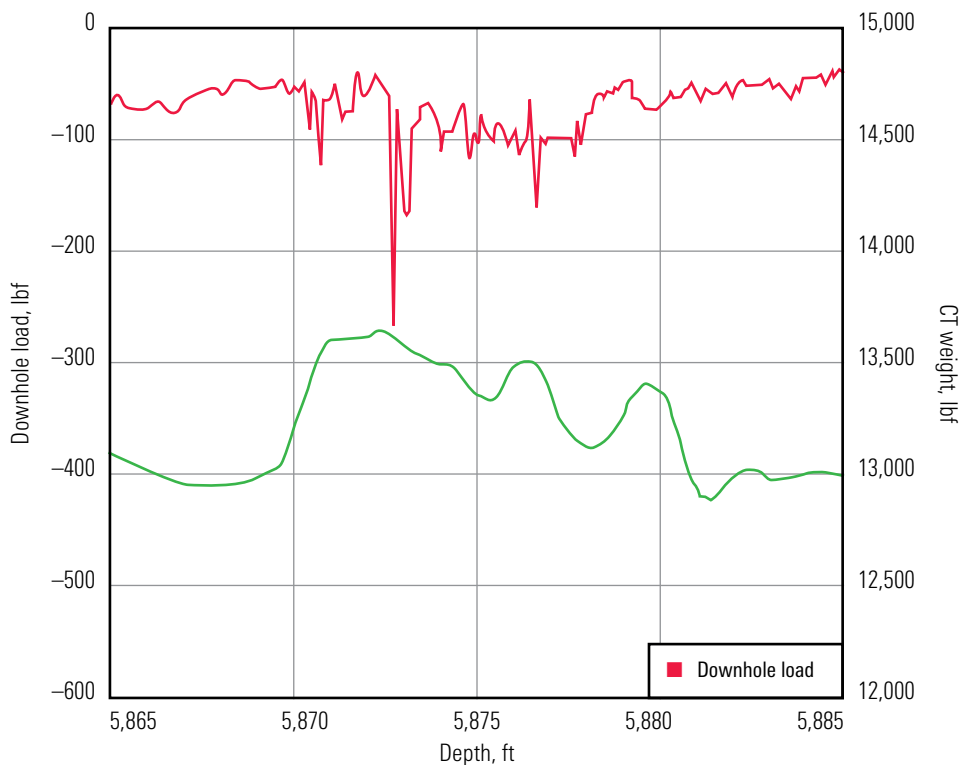
#### Interventions with greater confidence and success

ACTive TC\* CT real-time tension and compression tool provides downhole load and torque measurements in real time with ACTive services, while maintaining pump-through capability. The measurements are conveyed on CT that is enabled by fiber-optic telemetry. Effective in a wide range of downhole environments, the ACTive TC tool eliminates errors introduced by extrapolating surface measurements for downhole-load-sensitive operations. You can adjust job parameters based on real-time downhole information and carry out interventions with increased confidence and success.

# ACTive TC

Combining TC measurements with other ACTive services measurements like pressure, temperature, gamma ray, and casing collar location enhances the in-well live family of CT services. Monitoring critical downhole CT load parameters to achieve successful isolation in deviated and horizontal wells improves the effectiveness of ACTive Isolation\* CT real-time zonal isolation services. ACTive services involving fishing or manipulation of completion hardware benefit from the accurate indication of latching, releasing, and jar and accelerator activation when wellbore conditions do not allow a clear surface indication.

ACTive TC Tool Specifications		
Equipment specifications	OD	2.125 in
	Makeup length	47.80 in
	Total weight	38 lbm
	Flow path diameter	0.688 in
	Max. ball drop size	5/8 in
Operational specifications	Operating temperature	300 degF
	Pressure rating,	12,000 psi (at max tensile rating)
	Tensile strength	45,000 lbf (at max pressure rating)
	Max. torque	800 ft.lbf
	Max. flow rate	2 bbl/min
	Fluid compatibility	All common treating fluids including acid. H <sub>2</sub> S compatible
	Max. proppant concentration	0.45 kg
Measurement specifications	Pressure compensated measurements	Yes
	Axial load range	-10,000 to 45,000 lbf
	Axial load accuracy	Absolute: 500 lbf + 1% Applied Localized: 2% Applied
	Axial load resolution	<5 lbf
	Torque range	0-800 ft.lbf
	Torque accuracy	<50 ft.lbf
	Torque resolution	<5 ft.lbf



*Spike in downhole load curve provides confirmation of shifting of sliding sleeve; no indication is seen on the CT weight measurement at surface.*

[slb.com/ACTIVE](http://slb.com/ACTIVE)