

Methane digital platform



Manage methane emissions in the first digital platform integrating detection, tracking, and reporting from measurement tech



Emissions inventory:

- Gain in-depth insights into companywide methane emissions monitoring and measurements
- Drill down to specific locations for quantification and statistics



Real-time monitoring and alerts:

- Receive instant notifications as soon as a leak is detected



Root cause analysis:

- Integrate multiple measurement sources, monitor trends, track changes, and identify abatement opportunities



OGMP 2.0 reporting:

- Consolidate methane quantification and comparison with existing estimates to help you achieve Oil & Gas Methane Partnership (OGMP) 2.0 Gold Standard

Applications

- Quantify and report emissions
- Monitor emissions with dashboard alerts and notifications
- Track emissions continuously in real time with connected measurement services
- Analyze emission trends and breakdowns at both asset and site levels

For upstream, midstream, and downstream oil and gas production operations or locations that require methane monitoring.

How it is unique

- Provides a digital foundation that makes it easy to take data from multiple and disparate sources, bringing them together in a coordinated and traceable way.
- Enables you to create and deploy new workflows that combine your data from various sources, facilitating informed decision making to achieve reduced emissions. This also encourages rapid experimentation with subject matter experts and data scientists to accelerate emission reduction initiatives more cost effectively.
- Aids in aligning and scaling measurement data handling across assets and the organization, providing a comprehensive solution for efficient and effective emissions management.

How it reduces emissions

The methane digital platform from SLB End-to-end Emissions Solutions integrates emissions data from multiple sources to measure and track your methane emissions in real time, understand their causes and drivers, and enable you to take appropriate remedial actions.

A single home for all your methane data, the platform establishes a companywide inventory of measured methane sources and provides a live view of your emission statistics, enabling you to explore and manage fugitive and process emissions. Get notified as soon as a leak is detected by different measurement systems and prioritize and rank your leak detection and repair (LDAR) activities accordingly. Each emission event will be tracked based on its source, when it first was detected, how long it lasted, and the total volume of methane emitted.

Our methane digital platform facilitates collaboration between functions involved in emission reduction (measurement, operations, HSE, planning, and sustainability). The platform provides a structured approach that increases the returns on your emissions management investments by reducing costs and manual work. In addition, it facilitates comprehensive understanding of improvements required to achieve regulatory compliance and certifications relevant to your operation.



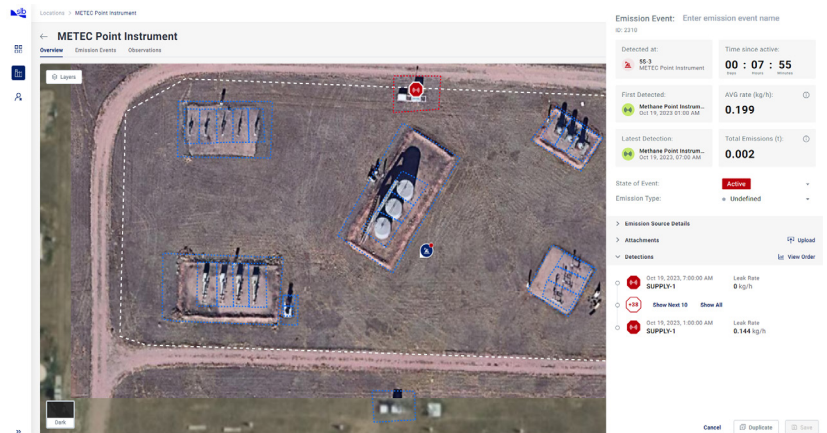
The methane digital platform delivers efficient detection, single-source tracking, and easy reporting of methane emissions. Its modular and open architecture enables the integration of data from any methane monitoring and measurement system.

Methane digital platform

How it works

The methane digital platform has different apps for the various monitoring systems, where each app is dedicated to the ingestion and interpretation of the selected instrument or vendor measurement service. Accessible in the industry standard Delfi digital platform, apps are managed as subscription services and are all synced with a common emission inventory for all locations, sites, and facilities at the enterprise level. Your methane emissions data is interpreted into actionable insights and assists in finding the root causes of emissions.

- Data is accepted from SLB methane monitoring technologies and drone and satellite sources provided by SLB partners. Data from other third-party sources may be supported on a project basis.
- Emissions data can be made available to other systems and integrated within your organization for real-time or operational decision making and for analysis with other E&P software. Our team works with your subject matter experts to help you understand your emissions in real time, so that you can direct your measurement resources most effectively.
- A comprehensive view of all assets and associated samples gives you insights into measurement coverage, statistics about emission sources, recommendations for cost-efficient reduction strategies, and real-time screening of abatement opportunities.

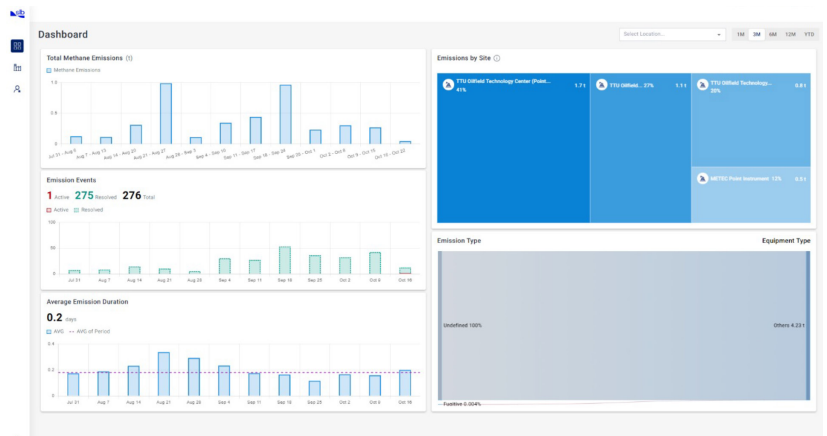


Facility overview of real-time emissions: See all emission events live as they are tracked by the multiple measurement systems at a given location.

The screenshot shows the 'METEC Point Instrument' inventory list. It displays a table of emission events with columns for Name/ID, Status, Type, Detected on, Closed on, Detected at, Detection Methods, Average Rate (kg/hr), Methane (t), and Report. The table lists 12 events, with the first event (2210) being Active and the others being Resolved.

Name/ID	Status	Type	Detected on	Closed on	Detected at	Detection Methods	Average Rate (kg/hr)	Methane (t)	Report
2210	Active	Undefined	Oct 19, 2023, 1:00 AM	-	ES-3	ES-3	0.199	0.002	-
2208	Resolved	Undefined	Oct 18, 2023, 1:00 PM	Oct 18, 2023, 4:00 PM	45-3	45-3	0.1	0.0003	-
2209	Resolved	Undefined	Oct 18, 2023, 9:00 AM	Oct 18, 2023, 10:00 AM	ES-1	ES-1	0.1	0.0001	-
2205	Resolved	Undefined	Oct 17, 2023, 5:00 PM	Oct 17, 2023, 7:00 PM	SW-3	SW-3	1.243	0.002	-
2204	Resolved	Undefined	Oct 17, 2023, 4:00 PM	Oct 17, 2023, 5:00 PM	47-1	47-1	0.1	0.0001	-
2202	Resolved	Undefined	Oct 17, 2023, 12:00 PM	Oct 17, 2023, 2:00 PM	46-1	46-1	0.265	0.0005	-
2201	Resolved	Undefined	Oct 17, 2023, 7:00 AM	Oct 17, 2023, 12:00 PM	SUPPLY-2	46-1	0.012	0.002	-
2200	Resolved	Undefined	Oct 17, 2023, 2:00 AM	Oct 17, 2023, 7:00 AM	SW-1	46-1	0.175	0.0009	-
2209	Resolved	Undefined	Oct 16, 2023, 3:00 AM	Oct 16, 2023, 8:00 PM	47-3	47-3	0.454	0.008	-
2208	Resolved	Undefined	Oct 15, 2023, 8:00 AM	Oct 15, 2023, 7:00 PM	SW-1	46-1	0.004	0.007	-
2207	Resolved	Undefined	Oct 15, 2023, 7:00 AM	Oct 15, 2023, 8:00 AM	SW-2	46-1	0.1	0.0001	-
2206	Resolved	Undefined	Oct 15, 2023, 4:00 AM	Oct 15, 2023, 7:00 AM	SUPPLY-1	46-1	0.077	0.002	-
2202	Resolved	Undefined	Oct 14, 2023, 11:00 AM	Oct 14, 2023, 4:00 PM	48-5	46-1	0.22	0.001	-

Inventory list of all emission events: Assess a historical overview of all methane emission events tracked, status, total mass released, and the duration of an event.



Totalizer dashboard: Get an aggregated overview of emissions measured from across all applied measurement technologies, filtered by time and location.