

Environment	Unconventional
Well type	Horizontal
Hole size	8½ in

### Background

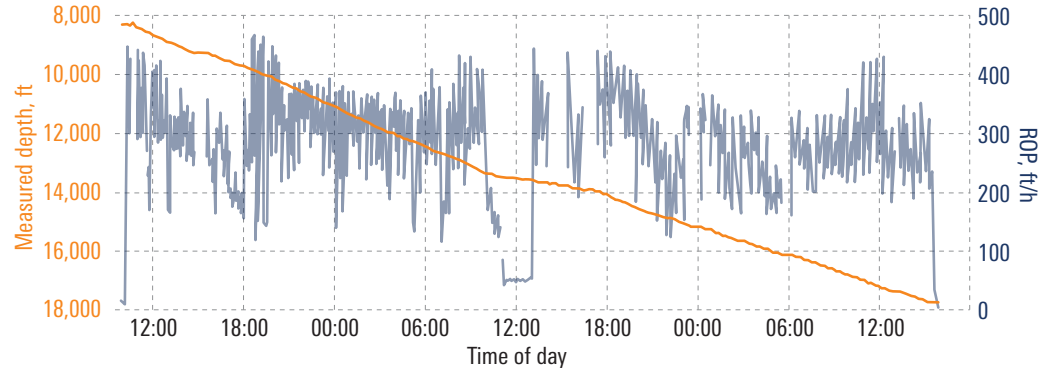
An operator needed to increase run length without compromising trajectory control and ROP while drilling the 8½-in section of a horizontal well in the Spraberry Formation.

### Technology

- PowerDrive Orbit\* rotary steerable system
- SlimPulse\* retrievable MWD service
- TorqForce\* ruggedized steerable motor

## PowerDrive Orbit RSS Drills Record-Setting 9,630-ft Lateral in One Run

Spraberry operator achieves 300-ft/h ROP, reaches TD in just 2.2 days



*In the first 24 hours, PowerDrive Orbit RSS drilled approximately 5,000 ft [1,524 m]. The innovative RSS drilled the 8½-in section in record time—completing the entire 9,630-ft [2,935-m] lateral in one run in just 2.2 days. The combination of closed-loop inclination and azimuth control, as well as new pad designs, enabled an ROP of more than 300 ft/h while maintaining the planned trajectory. The TorqForce motor was used to enable drilling with a higher differential pressure. This transferred more weight to the bit and increased the overall drilling efficiency.*