

TEXAS
WOLFCAMP FORMATION

Lithology:	Shale
Well type:	Horizontal
Hole size:	8½ in

Background

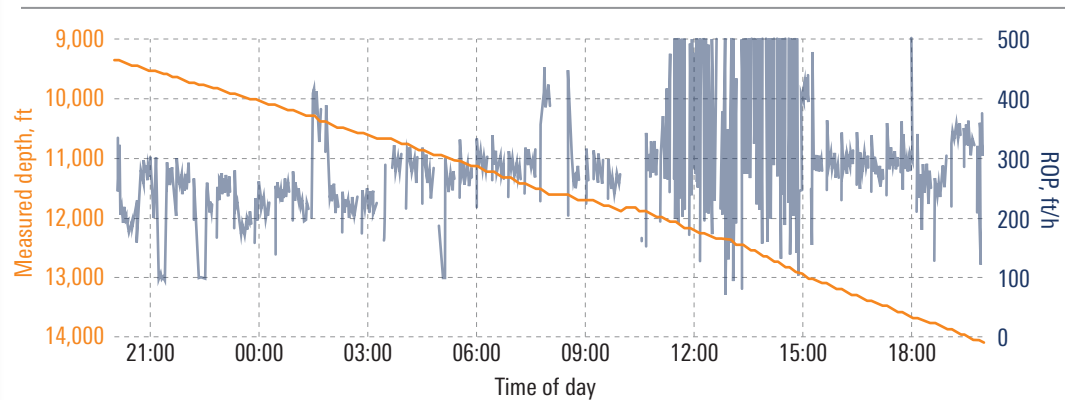
An operator needed to cut drilling time and increase run lengths in the Wolfcamp Shale. Schlumberger deployed PowerDrive Orbit* RSS with the TorqForce* ruggedized steerable motor for enhanced speed, trajectory control, and reliability in this unconventional formation.

Technology

- PowerDrive Orbit RSS
- SlimPulse* retrievable MWD service
- TorqForce motor

PowerDrive Orbit RSS Drills Record 4,769-ft Lateral in 24 Hours

Wolfcamp operator achieves 300 ft/h ROP in 8½-in section



The innovative BHA maintained planned well trajectory while achieving an ROP of more than 300 ft/h [91 m/h]. The operator drilled 4,769 ft [1,454 m] in one day—beating all previous daily footage records for the operator in the county.

*Mark of Schlumberger. Copyright © 2018 Schlumberger. All rights reserved. 18-DR-406463