

LIBYA

Reservoir	Gas condensate
Formation	Carbonate
Porosity	~18%

Background

The operator needed to conduct initial formation pressure-while-drilling operations in a lithologically uncertain environment to confirm a thin oil leg located directly below a gas zone. Formation pressure was acquired in three wells to define fluid types and detect fluid contacts (oil/water and gas/water contact).

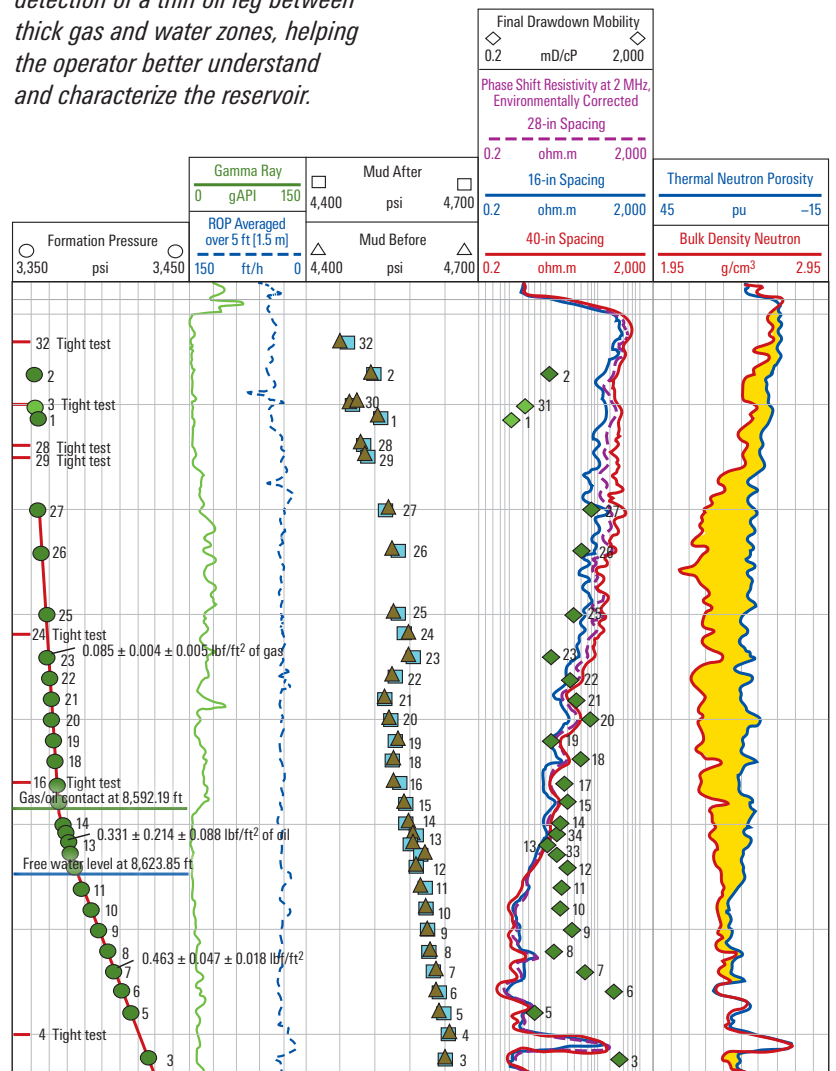
Technology

StethoScope* formation pressure-while-drilling service

StethoScope Service Reveals Reservoir Connectivity, Confirms Oil Presence in Carbonate Field

LWD measurement acquires formation pressure, identifies hydraulic link, and detects thin oil leg

Pressure points acquired on three wells identified connectivity among separate blocks; pressure points acquired in the 12¼-in section resulted in higher values than those acquired in the 8½-in section. Continuous real-time support enabled detection of a thin oil leg between thick gas and water zones, helping the operator better understand and characterize the reservoir.



*Mark of Schlumberger
Other company, product, and service names are the properties of their respective owners.
Copyright © 2017 Schlumberger. All rights reserved. 16-DR-144018